

THE HOMES MAGAZINE FOR MODERN LIVING

Livingetc

June 2021

INDIA EDITION

21+

CREATIVES SHARE
SUSTAINABLE
IDEAS FOR 2021



Eco-conscious designs



SWAN III
FRANCESCO BALZANO



CUROQ

BUILDING 06 R10 DESIGN DISTRICT DUBAI
INFO @ CUROQ.COM

DUBAI
ALINA - 971 50 867 851 3
DELHI
JASHANDEEP - 91 8360426514
MUMBAI
SHWETA MOTWANI- 91 9978005410



11

20



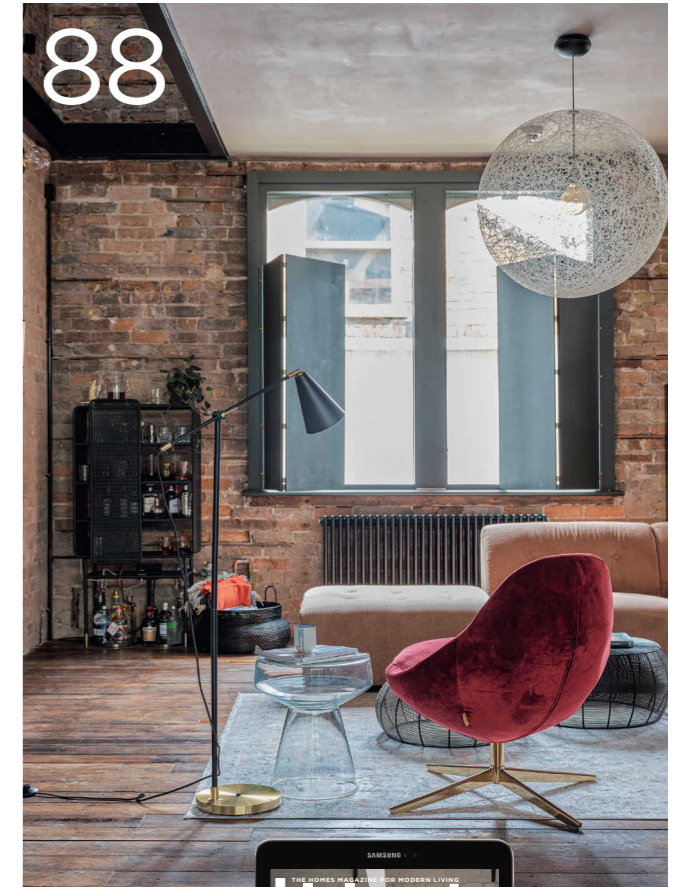
18



68



20



88

[News & views]

11 NEWS
Check out all the gorgeous new home jewels: from Clarke & Clarke's Prince of Persia fabric collection; Swarovski's Bagatelle chandelier and the newsmakers...

21 ART
Today Will End, a mid-career survey exhibition of artworks by Shilpa Gupta.

112 AT HOME WITH
Vincent Roy a peek into the life and learnings of the Puducherry-based French furniture designer.

[Special Feature]

27 How can we preserve our environment? The Livingetc team spoke to 27 of the country's top creatives to understand their approach to sustainability at work and home.

[Shopping]

20 TREND
Ask nature From the runway to home accessories...

22 STYLE
Scheme of The Month Decorate with patterns

38 DECORATING ETC
Back to nature Using raw wood and foliage, earthy tones and a light touch, Swedish stylist Hans Blomquist is the modern master of bringing the outside in.

46 DECORATING ETC
Sage green a reassuring shade, offering calm and tranquillity. Experts extol its virtues and explain how to work it.

49 BUYER'S GUIDE
Sustainable Home Solutions: New trends and innovations.



11

Our cover stories are highlighted by a spot. Cover photography James Merrell



58

[Happy Homes]

58 A GREEN HAVEN
Situating in an oasis of green, this Delhi farmhouse, crafted by Aparna Kaushik, strives to be a quintessential example of biophilic design.

68 AN EARTHY MODERNITY
Veeram Shah of Design ni Dukaan reimagines urban living for a joint family in this chic and sustainable home.

78 ORGANIC REINVENTION
Raw textures and original features inspired the redesign of Mary and John Mulryan's 'upside-down' family home, which began life as a Victorian pub.

88 ADAPTIVE REUSE
The transformation of Gary and Keith's home from period property to warehouse-style abode is nothing short of awe-inspiring.



77

[Design Ideas]

100 DESIGN NEWS
Bathroom fittings, wall finishes, kitchen sets, espresso and cocktail makers, and lots more...

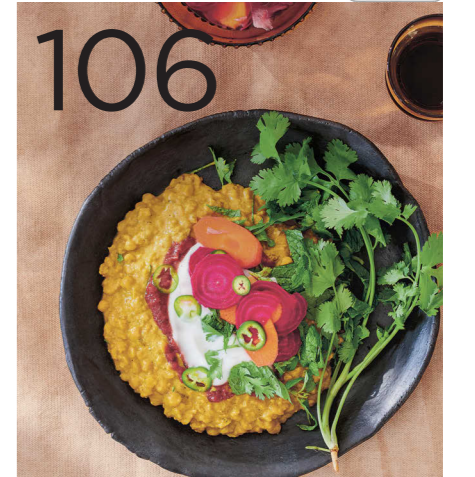
102 DESIGN DOSSIER
This Dehradun property designed by Rano Singh of The Muse is the perfect home in the hills.

[Food]

106 SUMMER FLAVOURS, WINTER WAYS
Bill Granger's sunshine-on-a-plate recipes are guaranteed to warm you from within



Digital edition available online on Magzter



106

Editorial

EDITOR Philip Mathew

CHIEF ASSOCIATE EDITOR & DIRECTOR Riyad Mathew

EDITOR-IN-CHARGE Anamika Butalia

FEATURES WRITERS Swati Singh, Varuni Mohan

JR. FEATURES WRITER AND EDITORIAL COORDINATOR Kamakshee Tewari

ART EDITOR Jayakrishnan M T

ASSISTANT ART EDITOR Prerna Jha

LAYOUT ARTIST B Manojkumar

EDITORIAL COORDINATOR Barkha Arora

BUSINESS HEAD Vinita Karunakaran

Business offices

VICE PRESIDENT MARKETING, ADVERTISING SALES Varghese Chandy

DEPUTY GENERAL MANAGER, MARKETING Oommen P Tharakan

New Delhi

CHIEF MARKETING OFFICER (NORTH) AND HEAD SPECIAL PROJECTS R Rajmohan

SENIOR MANAGER, MARKETING Supreet Singh Bedi

Mumbai

RESIDENT CHIEF GENERAL MANAGER, MARKETING Shree Kumar Menon

HEAD (SALES), LUXURY MAGAZINES Parna Chatterjee

EXECUTIVE, MARKETING Prerna Dulani

Chennai

REGIONAL CHIEF GENERAL MANAGER, MARKETING Suresh K C

SENIOR MANAGER, MARKETING John Sudhir Abraham

Bengaluru

REGIONAL CHIEF GENERAL MANAGER, MARKETING Ranjit Kurian

REGIONAL DEPUTY GENERAL MANAGER, MARKETING Praveen Gopinathan

FOR MARKETING INQUIRIES +9895395097

Editorial Office

TEJ BUILDING, 1ST FLOOR, 8-B BAHADURSHAH ZAFAR MARG, NEW DELHI 110002, INDIA

TELEPHONE 011-23354920, EMAIL HELLO.LIVINGETC@GMAIL.COM

Bureau

MUMBAI 022 22004358 **BENGALURU** 080 22867050/22867345

KOLKATA 033 24198344 **CHENNAI** 044 28190132

HYDERABAD 040 23324692

Circulation

SENIOR GENERAL MANAGER, SALES Hari M. Varrier

BENGALURU 080 22247735 **BHOPAL** 0755 2557937

CHANDIGARH 0172 2724699 **CHENNAI** 044 43181402/43181405

COIMBATORE 0422 2241911/ 2245470 **DELHI** 011 23379718/23379719

HYDERABAD 040 23314168 **KOLKATA** 033 24198233

LUCKNOW 0522 2341576 **MUMBAI** 022 24901331/39495969

PATNA 0612 2233809 **JAIPUR** 0141 2368360

Subscriptions

Manager, Circulation, Malayala Manorama, PB No. 4278, Panampilly Nagar, Kochi 686036, Kerala, India, Cell +919895395024

Livingetc UK

EDITORIAL DIRECTOR Sarah Spiteri

SALES DIRECTOR Content Licensing & Brand Partnerships Efi Mandrides

Printed by Jacob Mathew at Rajhans Enterprises, 134, 4th Main, Industrial Town, Rajaji Nagar, Bengaluru 560 044 and published by him at Manorama Buildings, Panampilly Nagar, Kochi 682 036, on behalf of The Malayala Manorama Co.Ltd., Kottayam 686001. Editor Philip Mathew.

© 2017 All Rights reserved. Livingetc is a registered trademark of Future plc.

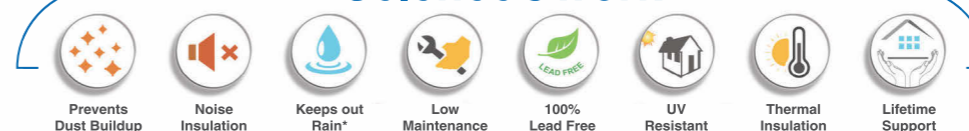


Keep the Outside Outside Forever



The Multi-chambered profiles and fusion welded joints improve overall sealing insulate windows against heat outside. Furthermore, they keep the rising temperature and energy cost resulting out of it well within the control.

Science@work



India's No.1 Windows & Doors Brand

Nationwide Footprint: Service across 327+ cities | Call: 1800 102 9880 (Toll Free) | 74286 91568 | SMS: WINDOW to 56161 | Email: response@fenesta.com | Visit: www.fenesta.com



A FRESH START

Over the past year, we've all heard 'a change is coming', 'the new normal', 'change is the only constant', 'we're in it together', etc, and wouldn't you say it became tiring to hear these words being spoken? That they began to completely lose meaning in the world we were living in. Especially when all we've desired is a fresh start.

The month of June, for me, is just that. It's one of the most dramatic changes in the weather in my city, Mumbai. The respite it offers after months of sweltering heat and balmy breezes is undeniable. Each year, I'm filled with anticipation of the first downpour, the aroma of petrichor in the air, as the rains wash down every single creation...from the structures we live in to the trees we live around. It is, in essence, a cleansing.

This phenomenon has inspired us to do something similar. We're looking at Livingetc India anew, with fresh eyes, fresh ideas and a fresh perspective. Over the next few weeks, we'll be approaching these changes in a systematic order – from our content, our narrative, our design and even, our digital presence.

Most importantly, we're throwing out the rule book and moving towards a brand new identity, one that promises to provide an exemplary showcase for the inimitable works of Indian architects and interior designers, photographers, product designers as well as the biggest names in food, beverage and travel.

These changes will take place in well-thought-out phases, of course, considering that we're still only shuffling from the living room to the dining area, from the home office to the kitchen, from the bed to the bath. And staying within the four walls of our homes for such an extended period has inspired us to re-decorate and surround ourselves with beauty – but without forgoing our environment in the bargain!

So, in this issue, you'll find homes that focus on adaptive reuse of spaces, a hallmark of sustainable living. One among them is Veeram Shah's recently completed project Terracotta House, which confirms our belief in working with indigenous creations by native artisans. We've also curated a list of products across segments to serve as a handy guide of 'green' designs to bring home. In case you're not sure where to start, worry not! We've got 27 names in the industry to share how they practice sustainable living at work and at home, which is the perfect pool of ideas to get inspired by!

Stay well and safe,

Anamika

EDITOR-IN-CHARGE

✉ editor.livingetc@gmail.com

📷 [annagram.b](https://www.instagram.com/annagram.b)



Italian Masterpieces

Get Back sofa designed by Ludovica + Roberto Palomba

Kyoto small table designed by Gianfranco Frattini

poltronafrau.com



Mumbai - Ground Floor, Wakefield House, Dougall Road - T. +91 22 22614848

Pune - Ground Floor, Trump Towers, Kalyani Nagar - T. +91 20 66473131

Surat - No. 6-7, Union Heights, Next to Lalbhai Cricket Stadium, Surat Dumas Road - T. +91 261 2977444

New Delhi - 99 Empire Plaza, Mehrauli-Gurgaon Rd, Sultanpur - T. +91 11 26809772

Hyderabad - H.No.8-2-682/B/6/A, Road NO.12, Banjara Hills - T. +91 4029557145

**READ
ABOVE
THE REST**



UNCLUTTERED WRITING STYLE
Complex issues and ideas explained in a clear, lucid style. No-nonsense reporting that keeps you up to date.

STORIES WITH A HUMAN TOUCH
Extraordinary stories of people, places and communities. Written in a way that moves, motivates and nourishes your soul.

SETTING TRENDS IN JOURNALISM
Exclusive interviews that become talking points. Trailblazing reports that capture the spirit of a changing India

HAPPENINGS FROM ALL OVER THE WORLD
No one covers foreign affairs better than THE WEEK. Get incisive reports and expert analysis from across the globe.

UNBIASED COVERAGE
Reports written without fear or favour. Analyses that get to the bottom of issues.

STIRRING COLUMNS
Insightful views, sharp-witted comments and astute observations by India's best

AGENDA
SHOPPING / NEWS / PEOPLE / DESIGN / EVENTS



TRENDING whimsical charm
Clarke & Clarke's Prince of Persia fabric collection takes you on a journey through the bustling streets of Marrakech. The collection features painted palm trees, architectural geometrics and metallic threads, inspired by filigree and glimmering coins. Available at Maishaa (maishaa.com)



Lighten up!
A portable and rechargeable table lamp Turny, by Emo Design for Fabbian, is an object that adapts to all environments. Available in various hues like white, charcoal grey, beige, green, red, blue, or dusty pink. (fabbian.com)

THE ADORABLES table topper
The pebble-like Ishino table by Daï Sugawara from Walter Knoll is large with organically hewn bodies seemingly floating on a dainty framework. Whether copper, bronze or brass, the outstanding craftsmanship of the fine metal surfaces of the cast tops lend these tables a special charm. Available at Plüsch. (mumbai@pluschliving.com, delhi@pluschliving.com)



Living
LOVES

ONE TO WATCH



SUMAN SHARMA

WHO? Principal and Head of Business at Mangrove Collective, a Delhi-based brand that celebrates local resources and traditional craftsmanship, where designers, craftsmen and clients are equal partners.

HOW? I was born in Delhi and grew up in Connaught Place. My childhood memories are of Lutyens-style neighbourhoods and their colonial architecture. I went to school in the city and later did my Masters in Furniture Design from National Institute of Design, Ahmedabad. After that I trained and worked in the interior design industry. The colonial designs that surrounded me as a child, houses with tall ceilings, fireplaces and verandahs, influenced me a lot. My father, a photographer, also inspired me to learn about space and form. My design approach and expression is a result of these experiences.

INSPIRATION The seeds of Mangrove Collective were planted several years ago by our sister firm, the multi-disciplinary architecture and design practice, Studio Lotus. The studio struggled to translate design concepts into reality because collaborations with like-minded people specialising in this domain and who



CLOCKWISE FROM LEFT Suman Sharma and her various products.

could bring the requisite technicality and expertise on board were not easy to find. It's easy to find people who specialise in a particular material like wood, metal, etc. However, to strike a balance between different materials and assimilate regional craft into it, was invariably an arduous task.

DESIGN PHILOSOPHY At Mangrove, we believe in a "conscious process". For us, design, art, craft and technology go hand in hand. When we say our work is craft-based, it doesn't necessarily mean that our products look hand-

crafted. Depending on the nature of the commission, the requirements, and the function, either hand-crafting or technology can take over the design of the products.

We constantly challenge ourselves to look at products and processes in a new way; combining traditional craftsmanship with state-of-the-art technology. We feel luxury sans craftsmanship is a vain effort, thus our products are designed with impeccable detail to bring joy to whichever space they inhabit.



Little things

These limited-edition Penguins from Lladró's Boldblue collection boast a matte porcelain body with a satin finish and golden details. (lladro.com)



Art of glass

Bring the zing into home décor with a pop of yellow. Mario Cioni's Luxe Amber handcrafted vase made with colour crystal set on an arched black base.

Available at Jay Strongwater. (jaystrongwater.com)



DESIGN HERO floor art

Up on the wall or down on the floor, the new Archetype rug collection from Jaipur Rugs in collaboration with Abin Chaudhuri is inspired from the fundamental principles of architecture through simple forms, colours and shapes on rugs made by hand. (jaipurrrugs.com)



Clean lines

Comprising a diverse set of units, Milton sofa from SICIS offers lavish and refined seating. This modular sofa has a structure in solid wood, plywood and polyurethane foam in various densities. The base frame comes in aluminium with matte bronze nickel, matte champagne, glossy black nickel, glossy champagne finishes. Available at Tessera India. (tesseraindia.com)

MINI TREND

Scent-sational

Misa luxury home fragrances has launched a range of scented candles. The Forever Collection offers six fragrances — Dewy Night, Enchanted Forest, Love Potion, Misty Garden, New Beginnings and The Wishlist — encased in an all-black matte jar and box. Fresh and sparkling notes with light floral and citrusy aromas trigger memories of dense pine forests, cosy winter nights and cheerful soirées. (misa.in)



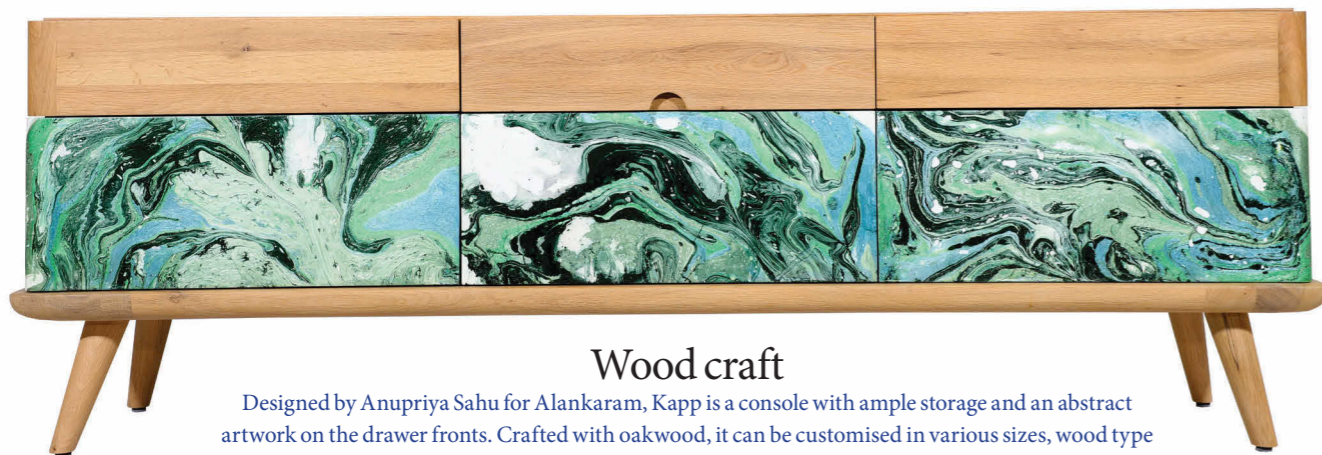
Ephemeral character

Swarovski's Bagatelle chandelier is a dainty and playful musical composition. It offers a new interpretation of a classic lantern, a fanciful dance of crystal rosettes and drops around a sculptural crystal basket. Available at Sacmeh International. (@[sacmehinternational](https://www.instagram.com/sacmehinternational))



Conscious design

This textured wall clock from Yours Concretely exhibits a minimalistic appeal, features a unique pattern combined with gold and silver accent foil and two metal hands. Made from reinforced concrete that is sustainable, BPA free and toxic-free. (yoursconcretely.com)



Wood craft

Designed by Anupriya Sahu for Alankaram, Kapp is a console with ample storage and an abstract artwork on the drawer fronts. Crafted with oakwood, it can be customised in various sizes, wood type and finishes. (alankaram.in)



serve in style

The Manufacture Rock Glow décor from Villeroy & Boch combines the slate-looking tactile surface with elegant copper shade. The collection offers saucers in three sizes and flat bowls. (villeroy-boch.com)



Classic gourmet

Ikai Asai's Kama collection offers a range of soulful and small products, created with glass and stoneware in light pastel hues. This collection offers glasses, plates and bowls. (ikaiasai.com)



NEW IN TOWN

sensuous curves

Designed by La Conca for Visionnaire, the Stankar rocking garden armchair is a curvilinear cord structure made with natural hemp and Lurex threads, inspired by espadrillas cult footwear. Metal frame interwoven with rope that surrounds the entire backrest convey a completely new perspective to outdoor decor. (visionnaire-home.com)

Monochrome
 Beyond Dreams celebrates minimalistic design decor with abstract forms and clean lines that references metal craftsmanship. Bring the outside in with fresh greens to uplift the monotone theme.
 @beyonddreams.in



DRAMATIC
Line art

The acrylic painting *Line in the Sand* by contemporary artist Hitesh Gilder showcases a complexity of emotion. The different strokes depict the lines we create for ourselves in our minds. The fluid ones versus the ones stamped in red indelible ink.
 (@hiteshgilder)



Natural beauty

Roll in a 'piece-of-pride' of aesthetic elegance and Indian heritage with these handmade floor coverings from Carpet Kingdom. Handwoven by skilled artisans using traditional weaving technique and produced on looms, the collection features various colours, timeless classic motifs and modern abstract styles. (carpetkingdom.in)

Livingetc
 THE HOMES MAGAZINE FOR MODERN LIVING
 INDIA EDITION
 4th Anniversary Issue
 January 2021 ₹150
BIG IDEAS OF A POLYMATH
Satyendra Pakhalé
 AMSTERDAM BASED INDIAN DESIGNER
 N. MAHESH THIRUVANANTHAPURAM
 SONALI & MANIT RASTOGI NEW DELHI
 ALOK SHETTY BENGALURU
 BHAVYA & NIRAV MUMBAI
 SHRUTI JAIPURIA BENGALURU
 JESMINA ZELIANG DIMAPUR, NAGALAND
Future is now
 SHOPPING: GET READY TO LIVE THE FUTURE LIFE
 LIVINGETC #THEDESIGNCHALLENGE

@Livingetc India
 @livingetcind
 @LivingetcInd
 @Livingetc India

SUBSCRIBE
<https://subscribe.manoramaonline.com/>

Velveteen dreams

Venice-based artist Anna Paola Cibin juxtaposes silk velvet, paint and glass to create artworks that reflect the world we live in



Velvet Lagoon Velvet, showcased at Venice Biennale 2011

CipCip, silk velvet with beige pigments, hand painted with white, blue, grey, pink and gold



Anna Paola Cibin has gained renown for her animated fabric installations, made by juxtaposing silk velvet with paint and glass. In her efforts, the innovative artist has created a unique version of the ancient technique of dyeing and printing of Venetian tapestries as well as deco pieces. The art and fabric design graduate spent some years in Venice with Murano's master glassblowers, where she honed her skills in the techniques of glass production and discovered the numerous possibilities offered by this material. The initial step in creating these captivating pieces consists of hand-dyeing the white silk velvet with pigments and powders to create the base. This canvas is then decorated with paint, gold and silver leaves, glass and murrine (layering different colours of molten glass around a core, then heating and stretching it into a long rod). The final result is a fluid and almost 3D piece that comes alive with any movement of light on it. We love that Anna's works can be incorporated as room dividers and screens, paintings, glass art deco pieces and even soft furnishings such as cushions and drapery.

Instagram: @annapaolacibin

A classical choice

Designer duo Shivan Bhatiya and Narresh Kukreja pay an ode to iconic pieces of art by reimagining them as a range of bespoke wallpapers



Dame art wallpaper from the Wilding 20s series features classic scenes from Renaissance art — the birth of Venus and ballerina Carlotta Chabert as Venus and Cupid, the God of Love

Continuing their foray into home interiors that defines a "Shivan&Narresh lifestyle", designers Shivan Bhatiya and Narresh Kukreja unveil their collection of luxury art-inspired wallpapers. The curated series offers 10 signature prints from Shivan&Narresh's five archival collections, namely Seoul, Araki, Edomer, Patu and Wilding 20.

Every single design is a distinct interpretation of empowering colours, stories of travel and intricate motifs that lend striking accents to modern-day interiors. The collection is scaled and customised to fit any room configuration, whether you wish to bring home the pulsating wilderness of Seoul, picturesque eminence of Seychelles, indigenous tribes of Asia or the whimsical romance of a glorified past — each of which is reimagined through the designers' kaleidoscopic lens.

"We've worked towards translating experiential images from our global travels — from Seoul to Seychelles — into this collection. History and culture come alive in these modern designs, where each print tells a story of its own," the duo say.

Website: shivanandnarresh.com
Instagram: @shivanandnarresh

catwalk looks

The latest trends stepping straight off the runways and into our homes



Kyoto conical hanging lamp from Orange Tree



Honeybee cushion from Studio Covers, ₹2,200



Earth table from Rival920



Marcel Wanders fragrance diffuser from Alessi



Farns sideboard from Walter Knoll



Bloomingville Emmy chair from Sweetpea & Willow



Loubishore bag from Christian Louboutin



Reflexiva floor lamp from Alsorg

Christian Dior SS 2020

Ask nature

Turn to the mother of all inspirations and bring home sustainable materials in the form of covetable products

FEATURE SWATISINGH

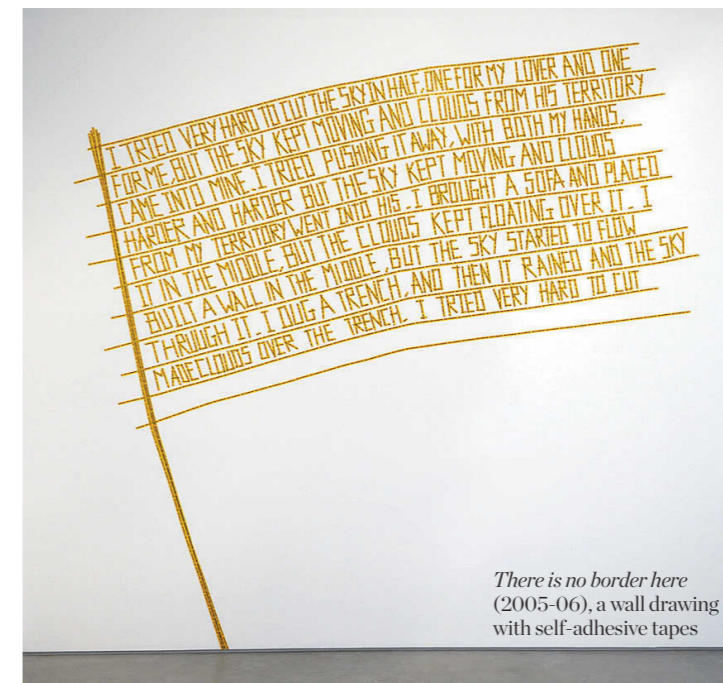
Art & Art Shows

SHILPA GUPTA

MUSEUM OF CONTEMPORARY ART ANTWERP



Someone Else (2011), an installation of 100 books written anonymously or under pseudonyms



There is no border here (2005-06), a wall drawing with self-adhesive tapes

The Museum of Contemporary Art in Antwerp (M HKA) presents *Today Will End*, a mid-career survey exhibition of artworks by Mumbai-based artist Shilpa Gupta. The exhibition that'll run till September 12, 2021 is curated by Nav Haq, the institution's associate director, to showcase the evolution of the artist's work over the last two decades. It will focus on the speculative nature of her practice as well as the depth of her critical engagement with behaviour, psychology, politics and language.

Shilpa creates artworks that observe human relations with subjectivity and insight through themes such as desire, conflict, security, technology, borders and censorship. Her work is diverse and frequently intuitive, often using media such as sculpture, installation, text and photography, and regularly exhibiting a dominance of AV technologies. We're fans of Shilpa's pieces for they represent her sharp political cognisance towards the role of psychology and aesthetics of the media, especially its complicity in the creation of fear. Websites: muhka.be; shilpagupta.com Instagram: [@shilpaguptastudio](https://www.instagram.com/shilpaguptastudio)



Scheme Of The Month
Decorate with patterns

Enliven spaces by incorporating this striking trend with the help of tips from design experts

Words / Swati Singh



CLOCKWISE FROM ABOVE: Ember dhurry, House of rugs; Oh So Sisco rug by Matthew Williamson for Obeetee; patterned cabinet, Beyond Designs; Artefacts decor piece, Ochre at Home; LaVernia chair, Ashley Furniture Homestore at Dash Square



We get it — incorporating different patterns into interior décor can be incredibly intimidating. But we promise, with a little insider information, you can mix and layer patterns like a pro. The trick to learning how to get it right is understanding the basic rules. Interior designer Farah Ahmed Mathias of FADD Studio shares, “There’s a lot of bold and dramatic patterns being used. You’re likely to find a juxtaposition of monochromatic ones, especially those hailing from different cultures. For example, black and white stripes are being paired with tropical botanicals that are also in black and white; or houndstooth prints with exotic scenes from Vietnam and Japan. The contrast of scale within patterns is trending quite a bit.”

Farah’s partner at FADD Studio, Dhaval Shellugar adds, “Patterns have always been relevant. What’s interesting is that motifs from different eras and cultures are now being amalgamated into singular spaces. This lends a local and global feel at the same time.



CLOCKWISE FROM TOP RIGHT: Modish panels, Xylo Woodworks; Bossanova, Sphere decor pieces, both from Bosa at Sources Unlimited; Azule cotton multi cushion cover, Sarita Handa, ₹2,950; Sip of Gold goblets, Sieger by Fürstenberg at Sources Unlimited; Wilderie wallcoverings, Clarke & Clarke at Maishaa

But what makes this trend relevant now? “These times demand we stay at home, thus making it a necessity to surround our environment with elements reminiscent of nature,” explains Sarita Handa, founder and creative head of her renowned namesake home décor venture.

Sarita adds, “Decorative furnishings can weave classic botanical elements and traditional motifs from the world over. A variety of such influences using different appliqué, hand-quilting, knots and embroidery techniques can be used in the form of bedspreads and cushions. Nature-inspired colours such as olive, terracotta, French blue, salmon, and beige or ivory can be woven into textiles for a Zen ambience.”

Farah points out a great way to incorporate this trend: “You can use a bold, black and white botanical wallpaper on all the walls of a living area, for example. Pair it with printed furniture of very fine pattern, almost like a texture. Or if you want to play safer, choose a bold-patterned rug and pair with solids and perhaps a singular seat can be in a second pattern. Another way to use patterns is to create them on the floor by using marble inlay or cement tiles. It gives the space a unique identity and anchors the area.”

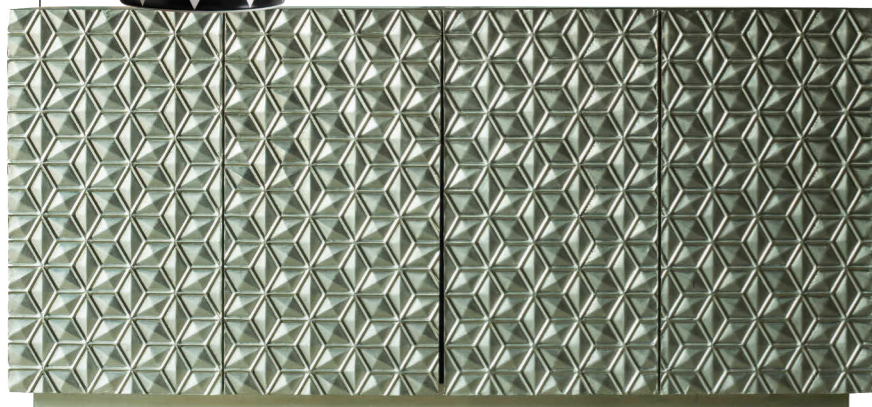
Dhaval adds a note of caution as it is easy to get carried away with this theme, “Layer, layer, layer. But also use colours to complement the pattern by picking the swatch of other pieces from the pattern itself.”



[Getting it right]

Tips on using floral patterns from Sarita Handa

- * EXTREMELY VERSATILE prints can be used to decorate the walls with wallpapers and floors with carpets
- * SMALL DECORATIVE elements in floral motifs add a touch of romance without making the ambience smothering
- * USE THEM AS ACCENTS, not the main motif
- * USE NEUTRAL COLOURS TO balance a dazzling print
- * PLAIN SILHOUETTES in darker colours can be used to enhance floral elements on furnishings and upholstery



Raindance S 240 1jet

Sustainable luxury

INNOVATION, DESIGN AND ECO-RESPONSIBILITY REMAIN AT THE HEART OF HANSGROHE GROUP'S DESIGNS FOR THE KITCHEN AND BATH

The Raindance S 240 1jet overhead shower with shower arm for wall mounting allows you to experience water in its most beautiful form

Hansgrohe Group leads the way in innovation and design by integrating sustainability into the world of luxury kitchen and bathroom design. Style and elegance are combined with functional usability and a pro-environment outlook. Not surprisingly, the brand has lived up to its motto 'We Live Water' by challenging the dominant perceptions in the global bath and kitchen fittings segment.

The brand leverages ground-breaking technologies to give water form and function. For instance, its proprietary Air Power technology in the shower infuses each water droplet with air, which reduces the percentage of water consumption while also enhancing the user's sensory experience. This is just one of the ways in which sustainability has been woven into the company's practice. Rebecca Weigold, who heads Hansgrohe's transparent sustainability programme, says, "We see ourselves as a strategic enabler. We view healthy living as a trend. Thankfully, we don't have to start from scratch."

Most recently, the establishment has introduced a range of showers and taps equipped with EcoSmart technology. These consume up to 60 percent less water than conventional products, enabling better conservation of water and optimising the amount of energy used to heat it. The benefits extend not just to users but also the environment.

Talis M54 U 220



The Talis M54 range features models that suit your kitchen concept and set a perfect example



Aquno Select M81

The Aquno Select faucet range offers three different spray modes, ultimate in functionality and design



Talis M54, 210

The single lever kitchen mixer features a hose box, 2jet (laminar spray and shower spray) and pull-out sprays with a lockable shower spray



Talis M54, 270

The Single lever kitchen mixer comes with laminar spray and adjustable swivel range

Some options for use in the kitchen include the Aquno Select M81 tap, which comes with multiple spray modes to ensure there's no unnecessary splashing of the valued resource or wastage as well as the slender, Talis M54 range that's ideal for a single household and also comes with multiple modes. Among the choices for showers are PowderRain and Rainfinity. PowderRain replicates a

rainforest-like atmosphere with thousands of warm, misty droplets that land softly and envelop users in a cocoon of water. Its technology also cuts energy usage as well as up to 20 percent more water. The Rainfinity shoulder shower, on the other hand, has a broad PowderRain jet and helps if you don't have a hair wash in mind.

[hansgrohe.com](https://www.hansgrohe.com)

Setting the Beat of Water. Since 1901

For 120 years, our passion for water has been our driving force. For ideas that are blueprints for tomorrow, and a design that stands the test of time. We are committed to our claim of setting the pace – then, now and in the future.



+91 20 6625 9500
marketing@hansgrohe.in

120
YEAR ANNIVERSARY

How can we preserve our environment?

In light of all that we've endured over the last year, it's clear that a shift in our lifestyles can have the greatest impact on our planet. During the days of strict lockdown, we experienced a reduction in air, water and land pollution as well as in waste generation and, most importantly, our cities got a chance to really breathe. This has given all of us, and in particular, the architecture and design industry in India a chance to rethink the way we must live sustainably. The Livingetc team spoke to 27 of the country's top creatives to understand not just their approach to sustainability at work but also at home. These are their inspiring ideas....



Ashiesh Shah

FOUNDER AND PRINCIPAL ARCHITECT, ASHIESH SHAH ARCHITECTURE + DESIGN; ATELIER ASHIESH SHAH

SUSTAINABILITY IN DESIGN We promote sustainability through localisation of resources by recontextualising Indian craftsmanship. We focus on using local and natural materials as well as indigenous processes that celebrate craftsmanship and its authenticity. The resulting objects are mostly handmade, thus exuding an element of individuality. I also advocate 'make in India' by supporting and empowering karigars and local craft practices.

LIVING SUSTAINABLY I've installed a hydroponic system at home, which helps me grow my own plants. It occupies minimal space, ensures a more rational use of water and allows me to cultivate my own greens at a relatively quicker pace.

“Pinakin Patel is a vegetarian by choice to live a life with a lower carbon footprint”

Pinakin Patel

ARCHITECT AND DESIGNER, PINAKIN STUDIO LLP

SUSTAINABILITY IN DESIGN Architecturally, Vastu compliance is a holistic approach to sustainability. We also employ local materials such as stone and wood, energy-saving LEDs, solar power generators, water harvesting solutions, and local trees, shrubs and edible greens (banana trees, for example) when it comes to landscaping. **LIVING SUSTAINABLY** I moved from Mumbai to Alibaug 20 years ago, and live and work from here. We grow our own food and do not even travel unnecessarily. In fact, I opt for ayurvedic or homeopathic medicines, when needed, and am a vegetarian by choice and knowledge since it genuinely has a much lower carbon footprint.



Sonali Rastogi

FOUNDING PARTNER AND PRINCIPAL, MORPHOGENESIS

SUSTAINABILITY IN DESIGN Over the past two decades, we've been practicing SOUL (Sustainable, Optimised, Unique, Liveable). We've added a human dimension, which is the key to our philosophy of decentralised growth and sustaining communities at source.

LIVING SUSTAINABLY After years of using biodegradable items, composting, recycling water, saving energy and living sustainably, at this time, seeing where our economy is, I have a renewed mission to support everything that helps an Indian business over anything else.

“Vaishali Kamdar's list of household hacks comes from her mother, who'd say that it's only the unimaginative who throw things away and waste them”



Vaishali Kamdar

PRINCIPAL DESIGNER, VAISHALI KAMDAR ASSOCIATES

SUSTAINABILITY IN DESIGN Indians are conscious consumers and are always trying to reuse as much as possible. Similarly, in our projects, we frequently reuse materials (reclaiming timber from discarded door frames, refacing furniture or using vintage pieces). Designing spaces that are timeless, flexible, naturally lit and allow for adaptive uses is a big win for us.

LIVING SUSTAINABLY Do bucket baths count? Seriously though, I am conscious about the consumption of water, energy, paper, plastics, donating unused items, and not wasting food. My list of household hacks is thanks to my mother who'd say it's only the unimaginative who throw things away and waste them.

Abha Narain Lambah

PRINCIPAL ARCHITECT, ABHA NARAIN LAMBAH ASSOCIATES

SUSTAINABILITY IN DESIGN The greenest building is one that already exists. While we recognise recycling of materials, we also need to understand the need to recycle spaces. Many historic buildings including old houses, industrial or public structures have years of use left, if we simply and sensitively restore and rehabilitate them. Adaptive reuse of historic building stock is our focus. We've transformed a disused fire station into a cafe, a dilapidated cinema into a live performance venue, a disused pump house into a restaurant.

LIVING SUSTAINABLY We consciously build green, recycling waste water, rainwater harvesting and using solar panels in projects.



Shonan Purie Trehan

PRINCIPAL ARCHITECT, LANGUAGE. ARCHITECTURE. BODY — LAB

SUSTAINABILITY IN DESIGN Cultural and climatic context are the first things we look at when we begin a new project. We look for locally sustainable materials for construction, and landscaping is planned as a sustainability tool. Instead of boundary walls, we create green fences.

LIVING SUSTAINABLY All our kitchen waste is turned to compost for use in our vegetable garden. Additionally, we repurpose waste material as much as possible, ensure it reaches recycle units and are converting our plumbing to a grey water system.

“Babu Cherian emphasises wood as an ideal, sustainable construction material”



Pankhuri Goel

PRINCIPAL ARCHITECT, STUDIO LOTUS

SUSTAINABILITY IN DESIGN Our work revolves around frugal innovation, contextual and climatic responses that are time- and cost-efficient. We use locally sourced and reclaimed materials to build projects that are durable, timeless, energy efficient and age well. Additionally, we engage with local artisans to reinterpret traditional crafts using state-of-the-art resources. We maximise natural ventilation, optimise daylight and outdoor views to ensure that the interiors are a sanctuary for rejuvenation.

LIVING SUSTAINABLY I've started growing herbs and vegetables in our kitchen garden, and any kitchen waste generated is composted. The current global state has made me question our lifestyle choices from fast food to fast fashion and everything in between.

Annkur Khosla

PRINCIPAL ARCHITECT
ANNKUR KHOSLA DESIGN STUDIO

SUSTAINABILITY IN DESIGN Quite simply, our vital concerns are the use of naturally sourced materials, rainwater harvesting for all our architectural projects, and the installation and use of solar panels (to return power back to the grid, if possible).

LIVING SUSTAINABLY I've begun to use biodegradable items for serve ware when required and on warm days, I prefer metallic straws to consume coconut water.



Babu Cherian

PRINCIPAL ARCHITECT,
BCA ARCHITECTURE

SUSTAINABILITY IN DESIGN Right from inception, our practice is rooted in vernacular architecture. Climatology plays a major role in architecture plans, so all our projects react positively in their environs. Timber, which is found in abundance in Kerala, when properly cured and treated, can last for centuries. This is why it'll be an ideal, sustainable choice for construction in hot and humid geographies. Incidentally, we ensure that for all the wood that's locally sourced, a new sapling is planted for every tree cut. This ensures the local ecosystem isn't disrupted in any way.

LIVING SUSTAINABLY We're reducing our dependence on paper (in the studio), single use plastics, etc.



Akshat Bhatt

PRINCIPAL ARCHITECT,
ARCHITECTURE DISCIPLINE

SUSTAINABILITY IN DESIGN Every form of architecture has some impact on the micro-environment as well as the larger living ecosystem — from shrubs and trees to birds, animals and microorganisms, as well as the biogeochemical cycles tied to it. So, being sustainable isn't just about adding certain design elements to a building. Instead, we need to rethink and ask ourselves what is truly essential for sustenance.

LIVING SUSTAINABLY Reuse, recycle, replenish, save are the basic tenets that I live by. We grow our own food, minimise waste generation and practice composting. We've cut paper consumption and minimised emails as they increase server storage requirements, an issue that's compounded during the lockdown.

“Akshat Bhatt points out the need to be conscious of digital pollution”



Benny Kuriakose

PRINCIPAL DESIGNER,
BENNY KURIAKOSE &
ASSOCIATES

SUSTAINABILITY IN DESIGN Half of our practice is dedicated to conserving old buildings, which end up being more sustainable on completion. This way, we use at least 40 percent less material. I believe that timber is going to be the building material of the future. Unlike earth, burnt bricks, granite, etc, it is a renewable and recyclable material.

LIVING SUSTAINABLY Leading a simple life reduces wastage. As a family, we treat bio-waste and utilise it as fertiliser for our vegetable garden. We've also minimised the use of plastics and become vegetarians, more or less.



Sarah Sham

PRINCIPAL DESIGNER, ESSAJEES ATELIER

SUSTAINABILITY IN DESIGN In keeping with what Abha Narain Lambah says that the most sustainable home is one that already exists, we try to reuse as much as is already there in existing structures instead of breaking things down or throwing them away. As a whole, our industry is extremely wasteful, so something as simple as repurposing old doors and windows in a project can only add an aesthetic edge but also to the sustainability factor.

LIVING SUSTAINABLY I avoid buying plastics — water bottles at the airport and straws, among others; I've even shifting away from sanitary napkins to silicon cups and from disposable diapers for my baby to washable cloth ones.



Vinu Daniel

PRINCIPAL ARCHITECT, WALLMAKERS

SUSTAINABILITY IN DESIGN *During a chance meeting with Laurie Baker back when I was still studying architecture, the iconic architect, inspired by Gandhi's teachings, explained how buildings could completely coexist with nature and avoid waste. Interestingly, in my practice, I came across a site that was once a dump yard. Instead of moving the waste elsewhere, I decided to build with it. That's when we first realised the patented Debris Wall and Shuttered Debris Wall, which is resource and cost-efficient, surprisingly strong and extremely pliable.*

LIVING SUSTAINABLY I'm a 'vagabond' architect and haven't built a permanent home or office for myself, so in that sense, the world has at least two less buildings.

Mohammed Afnan and Arun Shekar Gowda

PRINCIPAL ARCHITECTS, HUMMING TREE

SUSTAINABILITY IN DESIGN Upcycling fever is the next big thing in 2021. Sustainability, meaningful and contextual designs are 'new luxury'. As designers, we use contextual materials available near the site as much as possible (wood, clay, terracotta, old furniture, scrap materials for art and canvases, etc). We encourage local artisans, sourcing and upcycling furniture pieces from them to add character to spaces.

LIVING SUSTAINABLY We're committed to slow fashion brands such as Doodlage and Qlothé for their sustainable and eco-conscious apparel. Last year, we also had a custom eco-stamp with recyclable icons for our letter heads and envelopes to avoid printing when possible.



Niels Schoenfelder

PRINCIPAL ARCHITECT, MANCINI ENTERPRISES

SUSTAINABILITY IN DESIGN The most important aspect of sustainability is that clients, architects and contractors collaborate to create the best possible project. That includes the need to build (ideally) net-zero, repairable and beautiful structures! History has shown us that well-made buildings all over the world tend to be the ones preserved for ages by future generations. So once the lifespans of buildings grow, their chance of being truly sustainable in technological and cultural terms drastically increases. In the same line of thought, when a budget is fixed, it's good to build in a smaller scale but better.

LIVING SUSTAINABLY We compost, treat and reuse water, and also use solar shading to reduce energy consumption.

“Anjali Mody propagates at least 150 plants annually in her home in Goa”



Anjali Mody

FOUNDER AND CREATIVE DIRECTOR, JOSMO

SUSTAINABILITY IN DESIGN We use materials that once discarded will be reused or easier to decompose. Additionally, we try to use the same material in most products, so that any leftovers can be used for other items, reducing waste generation. We also recycle waste to create functional products. Finally, single use plastic is a no-no; and everyone at the studio is encouraged to use terracotta or glass water dispensers.

LIVING SUSTAINABLY Five years ago, when I moved to Goa, I began to live a more conscious life. Some of the changes are that I now compost all wet waste, drink well water, make our own spices, milk, peanut butter and curd. Our home propagates at least 150 plants a year, watered by sprinklers. These might seem small but they make a significant difference when you assess the collective waste that comes out of our homes.

Archana and Rupesh Baid

PRINCIPAL DESIGNERS, AND DESIGN CO

SUSTAINABILITY IN DESIGN We try to select an array of sustainable furniture, flooring and lighting made from organic material to minimise the eco-footprint. We believe that sustainability can truly be incorporated into designs by combining the past and present – by using antique furnishings to accessorise. Opting for minimal interiors definitely means there are fewer things that need to be manufactured, which lowers the negative impact on the environment.

LIVING SUSTAINABLY We function with as many reusable alternatives as possible rather than single use products such as reusable grocery bags and rechargeable batteries. We also donate unused items to the needy. Plus, we buy sustainable apparel produced by local businesses.



Madhav Raman

COFOUNDER AND PRINCIPAL, ANAGRAM ARCHITECTS

SUSTAINABILITY IN DESIGN Our focus is on reducing energy consumption by diversifying the programme and using density in intensively used spaces. We try to avoid, large capacity single use spaces. Other efforts include introducing “breathing” spaces; considering traditional or alternative “low-threshold” building technologies; ensuring the structure responds sensitively to the ecological, climatic, economic and socio-cultural parameters of the site; building for resilience to climate change.

LIVING SUSTAINABLY Three years ago, I stopped driving a car and now mostly cycle or use cabs and the metro, if I must.



Kanhai Gandhi

PARTNER, KNS ARCHITECTS

SUSTAINABILITY IN DESIGN Buildings and structures do not exist in isolation but are conceived and designed to respond to, support and enhance their surroundings. A number of strategies come in handy – from the basic orientation of the construction based on the micro-climate to technologically advanced concepts that reduce energy consumption. These include making the most of local environmental resources and employing materials that are recycled, reclaimed or renewed (in other forms). Installing solar panels, strategically planning courtyards as well as using energy-efficient lighting and advanced technology glass are some of the key pointers when it comes to designing spaces responsibly.

“Kanhai Gandhi shares key pointers to follow to realise a truly sustainable space”

Anshul Chodha

PRINCIPAL ARCHITECT, SANCTUARY ARCHITECTS AND DESIGNERS

SUSTAINABILITY IN DESIGN I prefer to use natural materials that are locally available within a radius of 50-100kms. We plan the orientation of the building, plant trees for strategic shading, use photovoltaic cells to generate electricity, harvest rainwater, treat waste water and recycle elements from an existing structure or adaptively reuse it. Most importantly, we aim to retain all or as many trees on a site as possible by building around them.
LIVING SUSTAINABLY I've been recycling, eliminating plastic, walking wherever possible and reducing paper usage as well as supporting brands that are sustainable and practice moderation.



Amitha Madan

PRINCIPAL ARCHITECT, TREELIGHT DESIGN

SUSTAINABILITY IN DESIGN There is a need to look at projects from a macro level. As designers, we must look at the intent of the project, and how that intent can create opportunity for various members of society. In doing so, the project can also become lucrative economically. For example, while creating a school for children with sustainable materials, the design must play a key role in encouraging and inspiring children to practice a sustainable lifestyle.
LIVING SUSTAINABLY Less is more. Personally, I have not shopped for new apparel for about two years now, which means I can't afford to gain weight; therefore, I eat healthy, stay fit, need less space and save money.

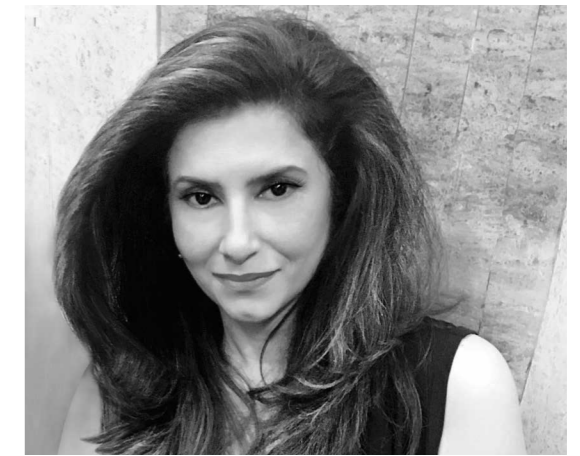
“Brinda Somaya points out that architects must protect the built as well as unbuilt environment”



Brinda Somaya

FOUNDER AND PRINCIPAL ARCHITECT, SNK (SOMAYA AND KALAPPA CONSULTANTS)

SUSTAINABILITY IN DESIGN Ancient scriptures have always told us to tread the land lightly, and that is a belief I've had from the very first building I designed over 30 years ago. There is now a need for professional concern with the environment and an improved quality of human life. We have to go beyond buildings and work with programmes that transform society. An architect's responsibility and role go much beyond building. We have to protect the built as well as the unbuilt environment, whether it is open spaces or the natural landscape. I also believe that we have to recycle, retrofit, restore and rebuild.



Lalita Tharani

PRINCIPAL ARCHITECT AND COFOUNDER, COLLABORATIVE ARCHITECTURE

SUSTAINABILITY IN DESIGN The little tinkering we do with substituting materials, at best, are minuscule interventions and at worst, leave us in questionable domain that really don't help in a serious discussion on sustainability. Hence, we focus our attention on 'Design Life Cycle', which are active design strategies that last.
LIVING SUSTAINABLY Performative environmentalism is often pernicious and counterproductive to the goals of sustainable living. Responsible food habits and agricultural practices have the potential to save the planet.



Priyanka and Piyush Mehra

PRINCIPAL ARCHITECTS, PS DESIGN

SUSTAINABILITY IN DESIGN We start at the basics. Small things such as mandating the use of digital drawings, cutting down on paper wastage, minimising the carbon footprint when choosing construction supplies (by working with local artisans and manufacturers), and following basic green practices (basic climatological orientation, using indoor plants, etc).
LIVING SUSTAINABLY We're big on organic products and an indigenised culture. A low dependency on consumerism and an inherent leaning towards naturopathy helps us keep a low profile and use less.



Preeti Knowles

CREATIVE DIRECTOR AND FOUNDER, HIDDEN GALLERY

SUSTAINABILITY IN DESIGN Our wood products are made using timber from sustainable forests. We use *neem* and *jamun* woods for a lot of our live edge pieces. These come often from trees that have naturally fallen due to their age or in a storm.

LIVING SUSTAINABLY I am excessively eco-conscious and do my best to recycle my waste, starting with segregating waste for composting. So, we're also doing away with plastic in daily use (toothbrushes, straws and cling film) as well as at work (adopting sustainable packaging). Last year has certainly taught me to be frugal with spending on clothing too. We can all live with much less.

“Tony Joseph cuts down on energy use through natural lighting and ventilation”

Tony Joseph

PRINCIPAL ARCHITECT, STAPATI

SUSTAINABILITY IN DESIGN Right from understanding and responding sensitively to the context of a project, to using locally available materials, from designing spaces where nature is an integral part to employing alternate energy sources – all these go a long way in making spaces sustainable.

LIVING SUSTAINABLY We limit the use of electricity through good natural lighting and ventilation, with ample tree cover that cuts down radiation. We also generate solar energy, have an extensive rainwater harvesting and use waste to generate biogas.



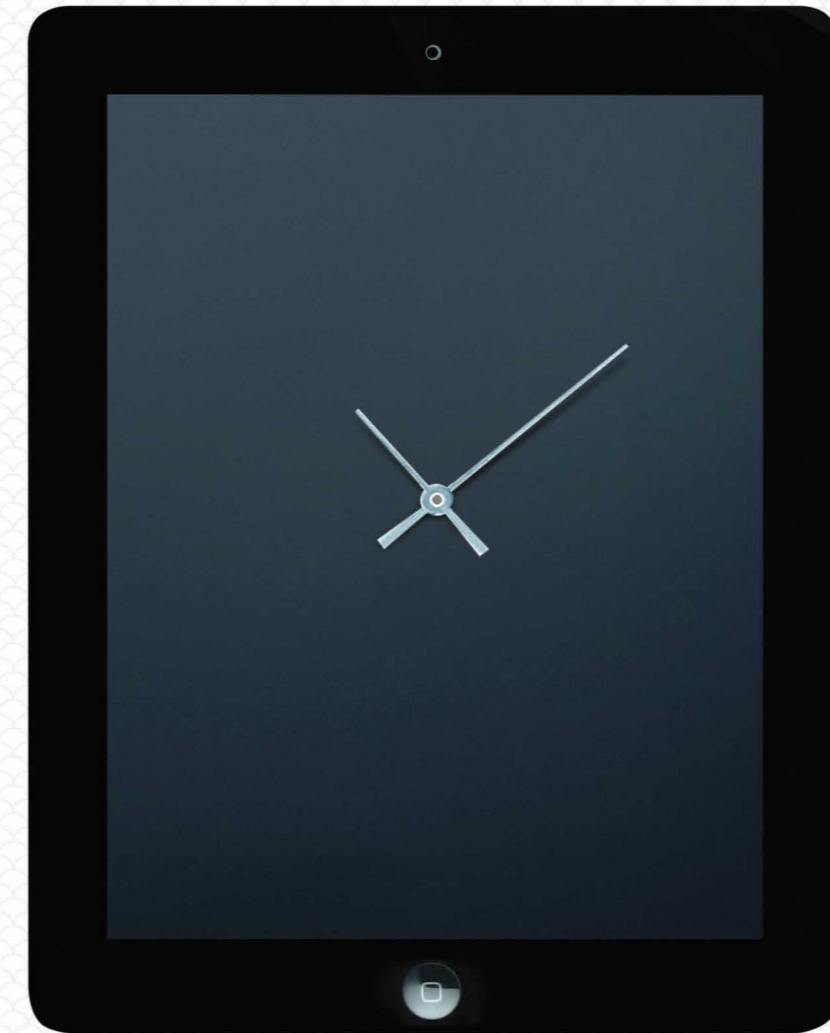
Khushboo Khandelwal

PRINCIPAL ARCHITECT, STUDIO DESIGN INC

SUSTAINABILITY IN DESIGN Sustainability can be found in the simplest and invisible forms in our designs – efficient planning of spaces for optimum utilisation and least material waste, providing effective and energy saving lighting, AI integrated, energy-efficient solutions and indoor outdoor spaces for best light and ventilation. **LIVING SUSTAINABLY** It's the little things that count. In our daily lives, we've started consuming less of everything, including personal and household items as well as food with least wastage. We've been recycling clothes, books, toys, paper, etc, and also using biodegradable items.



WatchTime India.
Now on iPad.



The iPad version of WatchTime India, the international luxury watch magazine, is now available on iTunes. You can either buy a single issue or subscribe for one year. Go on, have a great time.

Term	Price (₹)
Single issue	190
1 year subscription	490

WatchTime
India

THE MAGAZINE OF FINE WATCHES

back to nature

Using raw wood and foliage, earthy tones and a light touch, Swedish stylist Hans Blomquist is the modern master of bringing the outside in, as shown in these evocative ideas from his latest book

PHOTOGRAPHY Hans Blomquist

Pure, simple and calm, this work by interiors stylist, writer and photographer Hans Blomquist is a pared-back masterpiece. Based on earthy palettes, and centred around natural textures and organic materials such as linen and wood, these schemes are the perfect antidote to the noise and haste of the outside world. A contemporary decorating style that makes you stop and reflect – it's a new mood for a new year.



EARTHY HUES
Hans focuses on natural tones (left) that are warm and feel easy on the eyes. He describes the lime paint used here, Chaff from Bauwerk, as just exquisite and its uneven texture seems to capture every shade of the forest floor. The paint is also eco-friendly, made from clay, minerals and natural pigments.

Similar products: *etsy.com* for vintage round **stool**, Ikea for storage **basket**, Maison 15 for raffia **basket**, Oma Living for glass **vase**

LAYERED TEXTURES
The roughly plastered walls of this dining space have been gently updated with a wash of white, while original aged terracotta tiles cover the floor. These surfaces are offset by the curvy lines of classic 20th-century furniture, with a tactile textile adding a soft note. The result is a relaxed, welcoming atmosphere.

Similar products: Eero Saarinen's Tulip dining **table** (₹3,06,800 onwards) and **stools** (₹96,800 onwards) for Knoll from MTM Solutions, Fabindia for bistro **chair**, Bharat Flooring and Tiles for handmade terracotta **tiles**, Accord Floors for reclaimed **tiles**, Bengaluru-based artist Nirupa Rao for botanical **artworks** and *desertcart.in* for **clip frames**





RAW AND REFINED

A sleek mirror and ornate marble mantel form the backdrop for varying shapes and textures: the aged surface of an old oil painting, a clear glass dome and the raw tactility of vintage books and dried twigs combine in a delightful mismatched way for a characterful vignette.

Similar products: Vetromoda for custom-made **mirror**, mojarto.com for antique **oil painting**, desertcart.in for taxidermy glass **dome**

COSY SEATERS

Blend textures and materials to achieve a layered effect in a living space. The warmth of this deep, squishy sofa is set against smooth concrete and old wood, with shiny metal, delicate crystal and a tribal-patterned textile in the mix. The harmonious blend juxtaposed against a neutral palette, contrast and patina, creates a comfortable and charming spot to curl up with a book.

Similar products: Firefly Lighting for Flos' Arco **floor light** (₹1,77,000 onwards), Vita Moderna for B&B Italia's Camaleonda **sofa** by Mario Bellini, johnlewis.com for Marianella **chandelier**





MATERIAL ELEMENTS

Textiles soften a room's hard edges and a linen upholstered armchair offers homely warmth. Pair light fabrics with darker walls to prevent a scheme from feeling too rustic.

Similar products: Furniture Library for custom-made armchair, RR Decor and VFM Design for linen upholstery fabric

MOOD BOARD

With gentle tones of the natural world, this foraged collection of dried leaves and seed heads, driftwood and old rope was the starting point for the Hans' aesthetic. All the pieces and subtle hues work together and are soothing to live with.





COMPARE AND CONTRAST

Playing with shapes and materials allows the eye to dance from texture to texture. This sleek, round glass lamp base, soft, strokable shade and chunky raw-wood block unite to form an engaging focal point.

Similar products: Kavi for recycled bottle lamp, pepperfry.com for velvet drum shade, Knock on Wood and Differenture for custom-made block side table in oak

GO WITH THE GRAIN

Floor-to-ceiling birch plywood makes an impact in this bedroom without being overly intrusive. A leather stool functions as an informal bedside table and adds another textural layer alongside the cushions and soft linens. To keep the scheme feeling modern and minimal, look for slender shapes - the wall light is a discreet and practical addition.

Similar products: Eximcorp for birch ply panel, bedlam.store for washed linen bedding, Seetu Kohli Home for leather drum pouffes



Inspired by Nature: Creating a Personal & Natural Interior, written and photographed by Hans Blomquist (₹2,569, Ryland Peters & Small)



sage green

IT'S A REASSURING SHADE, OFFERING CALM AND TRANQUILLITY. HERE, EXPERTS EXTOL ITS VIRTUES AND EXPLAIN HOW TO WORK IT



Try sage with another shade of green for a look that has more layers and depth. Dado, panelling and architrave in Putti; wall in Ulla, both absolute matte emulsion, Little Greene

'Sage green is an optimal colour choice at the moment,' says paint expert Annie Sloan. 'It harnesses the calming energy inherent in green but anchors it with an earthiness and depth not always present in more vivid greens. Plus, it brings the outside in.'

'It's vital to make your home feel safe and comfortable, and sage is perfect — reassuring yet uplifting and invigorating,' says Judy Smith, Crown colour consultant. 'It creates a space that's full of life while still being relaxing and easy to live with.'

Green is at the centre of the colour wheel, so you can combine it with both warm and cool hues. 'To create a calming effect, marry sage green with cool grey-whites for a soft Scandi feel,' says Helen Shaw, director at Benjamin Moore UK. 'Or, for an earthier look, pair it with warmer off-whites or beige tones.'

'For something bolder, consider adding red, especially at the browner end of the palette, such as oxblood,' says Patrick O'Donnell, Farrow & Ball's brand ambassador. 'These are complementary hues on the colour wheel so will contrast effortlessly.'

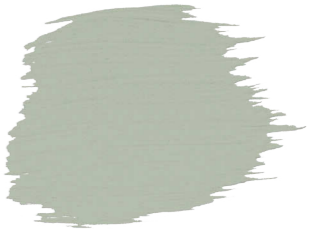
'Sage green almost glows when hit by sunlight, so my preference would be to use it in a south-facing room,' says Judy Smith, Crown colour consultant. 'However, it's light enough to brighten up spaces like passageways that may not be naturally lit.'

'In north-facing rooms, look for a shade with yellow undertones to bring warmth. For other aspects, cool or warm shades will work, changing with the light of the day,' says Carol Campbell, director at Isle of Skye Paint Company.

To add interest, use different sheen levels in the same shade of sage. 'For example, if you have picture rails, you could use eggshell on one section and matte on the other,' says Paula Taylor, colour and trend specialist at Graham & Brown.

Silver accessories can look striking against muted tones of sage. 'It also works really well with copper, which brings out its softer, warmer red tones,' says w's creative director Colin Roby-Welford. 'Alternatively, try sage green with black for a contemporary take on classic monochrome.'

the edit



BEST FOR exuding a welcoming sense of calm. Evening Breeze AP13-3, Shalimar Paints



BEST FOR complementing traditional features. Heritage Rosemary Leaf, Dulux



BEST FOR a natural and rustic look. Lilies Essence 4P0262 Emulsion, Berger Paints



BEST FOR a classic period property. Opaline Green, Asian Paints



BEST FOR woodwork with neutral walls. S164, Jenson & Nicholson



BEST FOR warming up a north-facing room. Cabbage Field 395, British Paints

Sage green creates a space that's full of life while still being relaxing and easy to live with

FEATURE SOPHIE BAYLIS

SUBSCRIBE AND SAVE



WITH LIVINGETC INDIA EDITION, BE IT 1, 2 OR 3 YEARS, YOUR HOME WILL CONTINUE TO INSPIRE.

Livingetc, the No.1 modern homes magazine in the UK, has been capturing the imagination of homemakers around the world. With the latest in modern interior design, unique decoration ideas, décor shopping and more. And now, Livingetc India Edition comes to you with an irresistible offer. Subscribe now and save up to 35% on the cover price. Hurry! Limited period offer.

THE HOMES MAGAZINE FOR MODERN LIVING
Livingetc
INDIA EDITION

YES! I would like to subscribe to Livingetc India Edition!

Term	No of issues	News-stand price	You pay only*	Mega Savings	Discount %
<input type="checkbox"/> 3 years	36	₹ 5400/-	₹ 3510/-	₹ 1890/-	35 Best Offer
<input type="checkbox"/> 2 years	24	₹ 3600/-	₹ 2520/-	₹ 1080/-	30
<input type="checkbox"/> 1 year	12	₹ 1800/-	₹ 1350/-	₹ 450/-	25

Name: Mr./Ms. _____ Date of Birth: _____

Address: _____

City/District: _____

State: _____ PIN (essential): Phone: (Mobile) (essential): _____

(Res) _____ Email (essential): _____
STD Code

Enclosed is the DD/Cheque, _____ dated: _____ [] ₹ 3510 [] ₹ 2520 [] ₹ 1350 favouring **Livingetc India Edition**.

Bank Name: _____

I agree to inform any changes in the postal address/contact numbers to which the publication is sent, as and when any such changes happen, and also to receive any details regarding the subscription.

Livingetc India Edition magazine/Malayala Manorama group of publications may also contact the email-id/contact numbers given by you for information/upgradation of Livingetc India Edition magazine/Malayala Manorama group of publications and offer promotions. In case you are not interested to receive any such information please tick the box

*On a cover price of ₹ 150/-

Fill in, enclose your payment and send to Livingetc India Edition, Manorama Buildings, P.O. Box No.4278, Panampilly Nagar, Kochi-682 036.

Rates and offer valid in India and for Indian citizens only • This offer will be valid for a limited period only • Conditions apply • Please allow at least 3-4 weeks to start your subscription • Please write your name and address on the reverse of the cheque/DD • Do not send cash • Non MICR/ Non CTS cheques will not be accepted • We may disclose your personal identifiable information to companies not owned by Livingetc India Edition who want to market products or services to you unless you specifically refuse to entertain any mail from companies not owned by us • Copies will be delivered by ordinary post only • **Subscribe online to Livingetc India Edition at manoramaonline.com/subscribe** • Toll free no. 18001035981 • New Delhi Tel: 011-23379718 • Mumbai Tel: 022-24901331, 64530315 • Bangalore Tel: 080-22247735 • Chennai Tel: 044-66918530/31 • Hyderabad Tel: 040-23322970, 23314168 • Kolkata Tel: 033-24198233 • Lucknow Tel: 0522-2341576 • Bhopal Tel: 0755-2557937 • Chandigarh Tel: 0172-2724699 • Jaipur Tel: 0141-2368360 • Patna Tel: 0612-2233809 • Coimbatore Tel: 0422-2241911 • Kochi Tel: 0484-4447888 • Kottayam Tel: 0481-2563646 • Trivandrum Tel: 0471-2328198

THE HOMES MAGAZINE FOR MODERN LIVING
Livingetc
INDIA EDITION
LE/JUNE-21

New trends and innovation in
SUSTAINABLE HOME SOLUTIONS

TAKE ADVANTAGE OF THESE INNOVATIVE AND STYLISH IDEAS FOR ECOLOGICALLY CONSCIOUS DESIGN SOLUTIONS



Do you envision a modern home that's stylish, functional and eco-friendly? Then this month's buyer's guide will entice you to make your dreams come true. This curated collection of interior design products that resonate with the belief of a sustainable lifestyle can accentuate your living space.

DISCREET DIVISIONS
Ecolosystem glass is a signature collection of Rimadesio. These matte lacquers are ecological and have an exclusive effect of "depth". Available at Sources Unlimited rimadesio.it

Furniture:

AESTHETIC AND LUXURIOUS PIECES THAT WILL APPEAL TO YOUR STYLE AND ECO-CONSCIENCE



SOMBRE STYLE
Take a cue from German furniture expert Cor and style your home in sustainably made, luxe furniture. Available at Plüsch. pluschliving.com



REINVENTED RESTORATION

An original mid-century vitrine has been restored by Baro Design and bits of scrap wood are crafted into this intriguing pattern. baro.design



WOODY WONDER

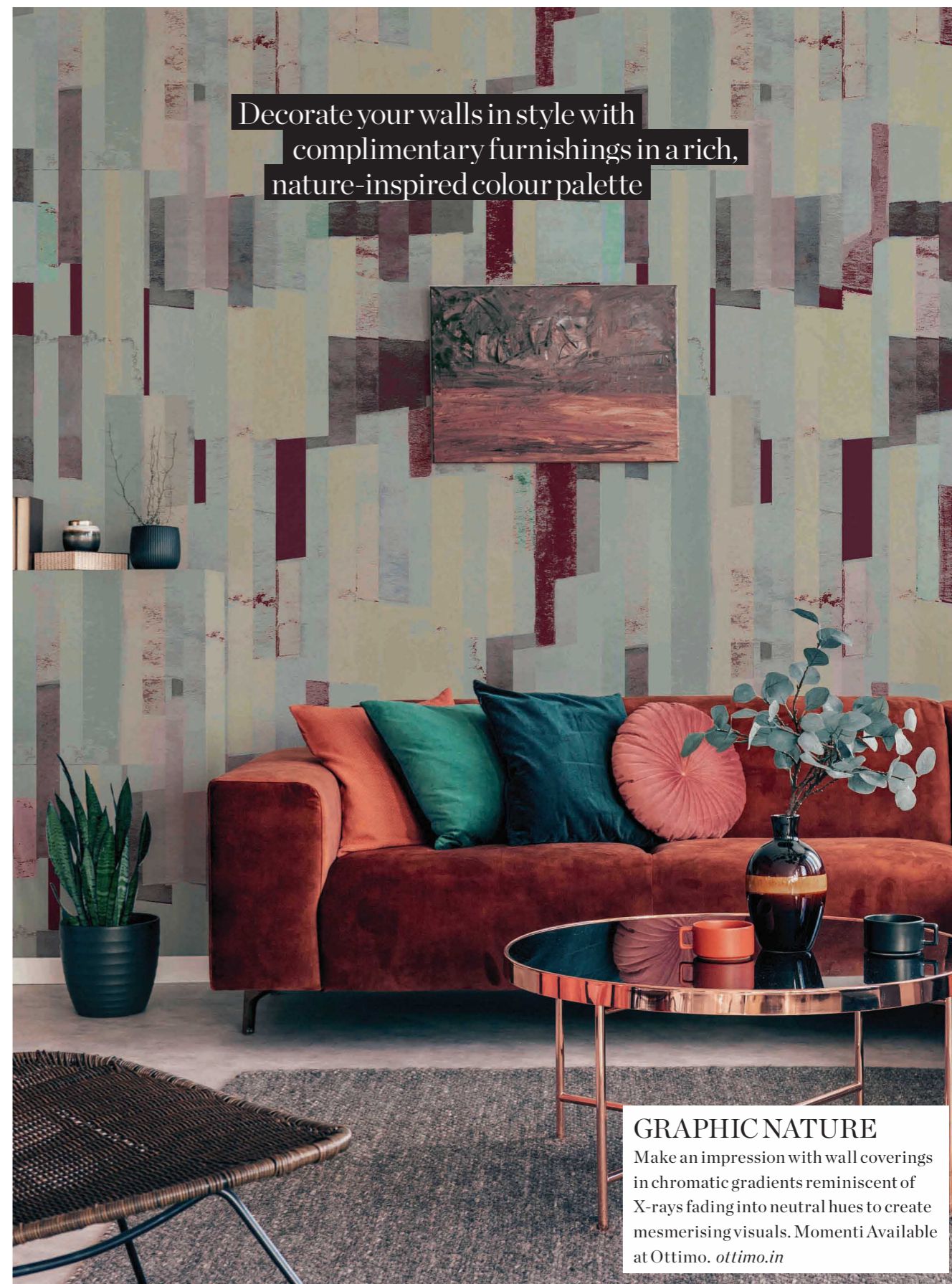
FusionAccess has created this organic coffee table, highlighting timber's natural, raw finish and appeal. fusionaccess.com

BEE LINE

This reclaimed teak and cane seater from Neeta Kumar's Inhabit combines brass accents and the imagery of bees. neetakumar.com



Decorate your walls in style with complimentary furnishings in a rich, nature-inspired colour palette



GRAPHIC NATURE

Make an impression with wall coverings in chromatic gradients reminiscent of X-rays fading into neutral hues to create mesmerising visuals. Momenti Available at Ottimo. ottimo.in

Furnishings:

BRING YOUR DREAM HOME TO LIFE WITH EFFERVESCENT FURNISHINGS INSPIRED BY FLORA AND FAUNA

NATURAL ELEGANCE

Redecorate with easy-to-install wall coverings from Artisan India's Brewed collection. artisanindia.com



Look no further
The Mooda Mirror is composed of a set of dowels stitched together to create a geometric edge around the glass. indo-made.com

MODERN MOSAIC

Light up your world with Dhola lamps by Orange Tree. These are sustainably made in earth-friendly materials. orangetree.in



TOOTRAY

Hosting is made easy with this handmade wood and marble tray from Orvi Home. orvi.com



CUSHY LIFE

Hand woven accents like these nautical cotton cushion covers are a must-have to a sustainably designed home. fabuliv.com

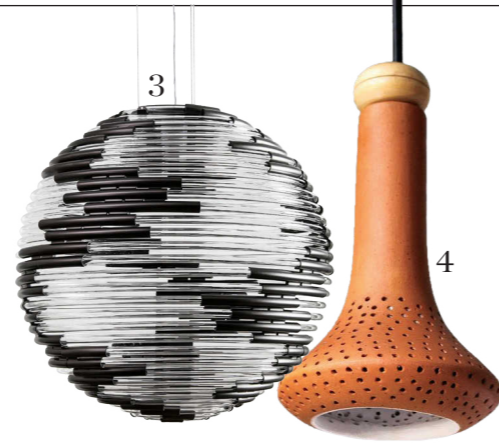


FLOWER POWER

Go bold with floral motifs: The hand tufted woollen Gardenia floor covering by House of Rugs is the perfect choice. houseofrugs.in

Lights:

EXPERIENCE A WHOLE NEW FORCE OF STYLISH ENERGY-SAVING ILLUMINATORS



1. FROM DUSK TO DAWN
The latest LED luminaires from Occhio by GM are durable and promise uniform quality of light. occhio.de

2. ONE TOUCH
Lutron's highly advanced wireless sensor provides convenient light control, energy-saving benefits and is easy to install. lutron.com

3. DISCO FEVER
A clear glass, spherical shape defines the GEA pendant lamp by Architonic, whose matte burnished finish generates a luminous effect in transitions. architonic.com

4. TERRACOTTA BEAUTY
FON, the LED pendant lamp in terracotta, is inspired by elements of a fountain. It is designed with hundreds of perforations to emit an experiential light action. thepurpleturtles.com

5. CURVY AND CUTE
Inspired from the golden snitch is this LED bulb from The White Teak Company. It features a milky white glass exterior, surrounded by a matte gold-finished metal frame. whiteteakcompany.com

6. REDEFINING LUMINOSITY
EyeLuv by Orient Electric is a new-age solution that aims to reduce the harmful and invisible flicker of LED lights through the revolutionary Flicker Control Technology. orientelectric.com

7. ZIRCON MAGIC
Ferruccio Laviani, the battery-operated table lamp by Kartell, offers eight hours of illumination and is 100 percent rechargeable. kartell.com

8. SUNSHADE LAMP
The chic and contemporary Florid LED by Havells is highly durable as well as saves up to 85 percent energy. havells.com

9. HANDCRAFTED BRILLIANCE
Lladro's Cactus Dome table lamp is made using matte-finished white porcelain and comes with an add-on rechargeable LED device. lladro.com



Kitchen faucets:

CONTEMPORARY AND NEO-CLASSIC FAUCETS ARE HERE TO REDEFINE YOUR KITCHEN



GO URBAN
Kraus' latest faucet is equipped with pull-down spray head technology and retractable hose. Its stainless steel finish makes it durable and resistant to marks and corrosion. krausfaucets.shop



MODERN CHIC
The chrome-plated Blanco by Häfele promises an even flow of water and temperature control. hafeleindia.com



SLEEK IMPRESSION
The contemporary Sospiro Collection by GRAFF features a clean, curvy body that's inspired by the silhouette of a classic bridge. graff-designs.com



ECOPOWER
These EcoPower self-sustaining faucets by TOTO need no electricity or disposable battery replacement. Plus, their advanced sensor, one of the smallest in the world, boasts a visual appeal. toto.com



MODERN INNOVATION
Blanco's Solenta-s Sensor lever uses sensor technology. Its stainless steel hose offers improved stability, easy mobility and movement. blanco.com

Showers:

MODERN AND SLEEK SHOWERHEADS THAT WILL TRANSMIT YOU UNDER A NATURAL WATERFALL



DOUBLE PLAY

We love Hydroluxe's handheld, stainless steel showerhead for its three different sprays — rain, massage and mist. shower-head.org



WIRELESS FINESSE

Grohe's Rainshower310 Smart Connect is equipped with wireless remote control access that enables users to combine or switch between two spray patterns. It is offered in round and square shapes to suit a variety of bathroom design. grohe.us



THREE IN ONE

The Forte by Kohler includes an advanced three-spray technology that promises full coverage, a pulsating massage and silk spray to ease sore muscles. kohler.ca

BLACK BEAUTY

Pulsify Select by hansgrohe is fitted with EcoSmart technology to use up to 60 percent less water. Plus, it's easy to maintain, owing to its QuickClean technology. hansgrohe.com



REJUVENATE

Vitra's Cascata range of showerheads boast a minimalistic design and a relaxing and destressing experience. vitra-india.com

HOMES

INSPIRING / BEAUTIFUL / RELAXED



68

AN EARTHY MODERNITY

Veeram Shah of Design ni Dukaan reimagines urban living in this sustainable and chic home

58

A GREEN HAVEN

Situated in an oasis of green, this Delhi farmhouse, crafted by Aparna Kaushik, strives to be a quintessential example of biophilic design

78

ORGANIC REINVENTION

Raw textures and original features inspired the redesign of Mary and John Mulryan's 'upside-down' family home

88

ADAPTIVE REUSE

The transformation of Gary and Keith's home from period property to warehouse-style abode is nothing short of awe-inspiring

House of the Month

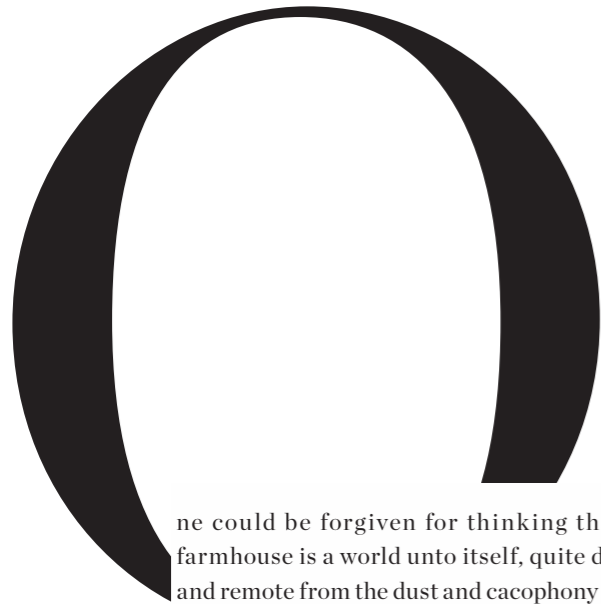
A Green Haven

Situated in an oasis of green, this Delhi farmhouse, crafted by Aparna Kaushik, strives to be a quintessential example of biophilic design

WORDS/Vanita Arora * PHOTOGRAPHY/Bharat Aggarwal



FAMILY LOUNGE
Marble flooring, wood-panelled wall from Alsorg and a PoP-coffered ceiling unite as the perfect shell for this cosy space. Curtains from Kapaas.



ne could be forgiven for thinking that this farmhouse is a world unto itself, quite distinct and remote from the dust and cacophony of New Delhi. But this is indeed the charm of our capital city, busy and polluted on the one hand but full of lush enclaves of green too, some of them so ideally located that they could be almost off a map. Ansal Villa in Chhatarpur is one such. The brief given by the Chaudharys to architect Aparna Kaushik was simple and straightforward. To create an elegant space for their family of five, including two children and an elderly parent, that would, in architectural parlance, be an example of biophilic design, connecting the occupants of the space with the outdoors, let in as much natural light as possible and be in harmony with the surroundings.

“Design is about understanding and visualising all possibilities,” says Aparna, who designed this 14,800 sq ft farmhouse that spans two levels. The L-shaped property boasts five bedrooms as well as a large landscaped garden and swimming pool. Its exterior walls are finished in an earthy hue, while the pillars are clad in Gwalior Mint sandstone. Facing inwards, all areas are designed around the waterbody and landscaped greens. There is a semi-covered verandah at the front,

which creates an interesting interplay of light and shadow throughout the day. The foyer has a view of the open courtyard and leads towards the living room. A wooden partition divides the living and bar areas, which has expansive windows framing the outdoors, and on the opposite side of the living room is the colonial-style study. The passage running along the building blocks leads to the dining room which faces the pool. A warm palette with neutral and natural colours runs through the entire house.

HOME PROFILE

THE OWNERS

The Chaudharys, their two children and an elderly parent.

THE PROPERTY

Ansal Villa is located in Satbari, Delhi, and boasts a built area of 9,300 sq ft on the ground floor and 5,300 above it. On the lower level is the foyer, living room and bar, a prayer room, study, powder room, dining, kitchen, two lounges and two bedrooms. The floor above accommodates a family lounge, three bedrooms, a pantry and a store.

An imposing semi-circular staircase separates private areas like the bedroom and lounge from the common ones that open to the poolside. “Landings are important when it comes to separation of spaces. Rigorous attention was paid to the selection of materials for the curving staircase,” says the architect.

Two bedrooms are on the ground floor and one of these opens towards the pool and cabana. Each of the five bedrooms has an individual story to tell, by way of the colour scheme, the flooring, the furniture and accessories. Aparna adds, “The aim is to create a holistically designed project, when the architecture and interior design are in harmony with each other.”



FAMILY LOUNGE

A quiet space on the ground floor, overlooking the pool, presents the perfect spot to reflect and read. The beige marble flooring and veneer-finished shelving unit are lit by cove lighting and a chandelier by Chitwan & Dhiraj designs.

PASSAGE VIEW

The ground floor passageway, is done up using natural materials such as rustic copper tiles and beige marble flooring and leads to the private spaces in the farmhouse.



THE DINING

Marble flooring continues in the dining area, where an onyx wall display with leather veneer shelves forms the perfect background for the stone-topped table with metallic legs from Proform Interiors.

“The aim is to create a holistically designed project, when the architecture and interior design are in harmony with each other”



“Each of the five bedrooms has an individual story to tell, by way of the colour scheme, flooring, furniture and accessories”

BEDROOM

In one of the primary rooms, a soft, pastel palette is offset by PoP moulded walls and ceiling as well as patterned stone flooring. The space is furnished with organically shaped, stone side tables and a modern chaise.

BATHROOM

Bulgari grey marble covers the floor and walls in this bathroom, where a back-lit mirror is placed above a wall-mounted vanity.



IDEAS TO STEAL

Organic designs, natural materials and tactile textures make this home a covetable and cosy cove

CLOCKWISE FROM RIGHT
Noguchi **table** from Vitra; Milano **chandelier** from Swarovski; Gold flower **vase** from Nestasia, ₹790; Bloomingville short matte black-fluted ceramic **vase** from *desertcart.in*, ₹3,389; Willow off white **cushion** from Address Home, ₹2,500; Knitted **pouffe** from *desertcart.in*, ₹15,609; Norway **sofa** from Gulmohar Lane



TOP AND ABOVE Upholstery **fabric** from Nirmals, ₹1,150; Italian statuario **marble** from RK Marbles

FOR CONTACTS SEE STOCKISTS

An earthy modernity

Veeram Shah of Design ni Dukaan reimagines urban living for a joint family in this chic and sustainable home

Words / Varuni Mohan * Photography / Ishita Switala

HOME PROFILE

THE OWNERS

This is the residence of a joint family, who wished to combine two apartments into a cohesive home.

THE PROPERTY

The Terracotta House is a 9,600 sq ft home in Ahmedabad, designed by Veeram Shah of Design ni Dukaan.

LIVING AREA

Bereft of walls, this space offers an immersive experience. It accommodates the living, dining and prayer rooms as well as a stairway. The reddish brown hue of terracotta and linear textures make up a modern visual language.

Rarely do you come across a home that's designed with a singular artistic vision, where every element resonates with a singular aesthetic. So, when we chanced upon Terracotta House by Veeram Shah of Design ni Dukaan, we knew we were in the presence of something truly unique. Its spatial planning, interior design, furniture, textiles and decor products are all created by Veeram himself, to ensure that this singular identity isn't lost.

Rather than assimilating curated objects into a space, this home showcases an ensemble of material exploration, customised installations and original furniture design. Indeed, the approach is nothing if not sustainable, owing to the significant use of natural, locally sourced materials that are handcrafted by native artisans.


Veeram and his practice's design prowess caters to a traditional familial narrative in a modern format in this 9,600 sq ft home in Ahmedabad. Two apartments, stacked one above the other, have been joined to create a single unit for this joint family. On the lower level are the communal zones such as the main living room, kitchen, dining area, prayer zone and guestroom. A spiral, sculptural stairway leads to the storey above, which accommodates the family's private spaces — a living area, a lounge as well as the bedrooms.

Other than custom-creating furnishings and furniture, another way that Veeram ensures continuity is in the rhythmic use of wood on surfaces. This is evident in the Burle Marx-inspired curved

stairway whose irregular curves are highlighted by a bespoke light fixture that's akin to an art installation. Just opposite it is the prayer room that's concealed behind a Valsadi teak sliding door, which is another elliptical form in the home.

The elliptical form is also reflected in the silhouette of the bespoke coffee table in the living room and the custom-made illuminator in the dining area. Evidently, the curvaceous shape serves as a visual and tactile anchor throughout the home — from storage units to even door knobs. Veeram explains, "I wanted the homeowners to associate and eventually identify with certain shapes in the home. This allows a perceptible visual ownership of the overall space." Veeram has chosen to juxtapose the elliptical curve against linear graphic lines (in the headboards of the beds, murals, linens and storage units) specially to maintain the golden ratio.

When he first approached the project, Veeram first decided on sustainably sourced, natural materials such as Valsadi teak that comes from Gujarat's native forests. Its distinct reddish hue akin to that of terracotta, unique texture and pronounced veins are offset with brushed brass, another timeless material that effortlessly leads a touch of luxury to living spaces. Veeram has also ensured that all soft furnishings are customised using handmade textiles.

No wonder then that this abode — for its clarity of design, clean lines, naturally sourced materials, local craftsmanship and handmade techniques — is organic, original and outstanding. 

MAIN STAIRCASE

The design of the staircase intends to create a dynamic choreography between the different elements in the space.

GET THE LOOK Red hued Valsadi teak and brushed brass has been crafted by indigenous craftsmen into the composition of this space



THE DINING AREA

A play of materials, forms and functions reveals itself in the customised dining ensemble, which includes the furniture, lights and decor elements. The clay mural on the background wall was designed and executed by Rutva Joshi Design.





FAMILY LOUNGE

This informal zone has a Zen-like appeal with clean lines and an open layout that allows for free-flowing energy and togetherness. The space is peppered with accessories from Artemis Cast Stone, Dotto: Objects of Curiosity and The Crio. **GET THE LOOK** Baxter for couch, Jaipur Rugs for hand-woven textured rug



PARENTS' ROOM

Tonal use of beige in organic textures compliments the wooden flooring and creates a sense of harmony in the bedroom. Designed as a clean, clutter-free space the furniture is designed with niches to hold essential items for easy access. All elements including the tapestry, textiles, furnishings, and furniture elements are custom-made by Design ni Dukaan. **GET THE LOOK** Jaipur Rugs for floor covering, Abstrac Home for furnishings, The Orange Tree and Dotto: Objects of Curiosity for furniture and accessories



↑ **STUDY**
 Doubling up as a second guest room, when needed, this is designed as a de-cluttered space for focused thinking. Playful elements — the blackboard and curvy cabinet handles — lend an informal vibe, while rattan in the wardrobe adds warmth. **GET THE LOOK** thetimberguy.com for handcrafted wooden study tables, Fabindia for rattan panelled side cabinets



← **KITCHEN**
 The culinary zone is renovated to create more space, easy access and flexibility. The linear lines in the cabinetry exude a contemporary appeal. **GET THE LOOK** Ernestomeda India for similar cabinets

GUEST ROOM

The design continues in this boudoir, where the use of wood and an earthy green hue creates a calm ambience.

GET THE LOOK West Elm for beds, Fabindia for cotton bed spreads

MASTER BEDROOM

Two erstwhile rooms make up this spacious suite, where side tables serve as consoles at the very entrance. The walls are finished in charcoal lime plaster and custom brass elements, and a floating divan creates a cosy nook.

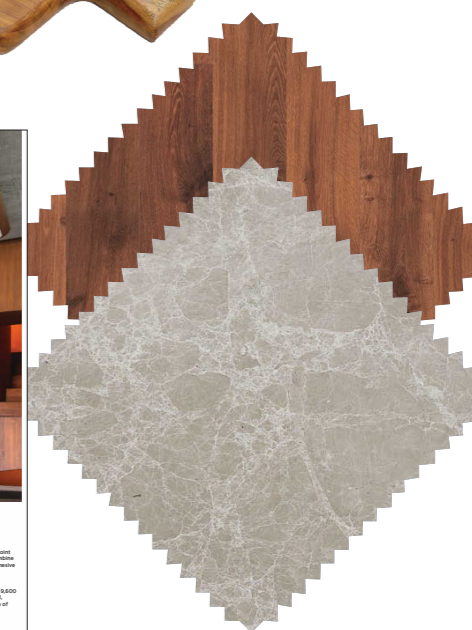
GET THE LOOK peelorange.com for similar furniture and light fixtures



IDEAS TO STEAL

Earthy green ambience with organic textures makes this home a calm Zen space

CLOCKWISE FROM LEFT
Handmade **rug** from Jaipur Rugs; Dew ceramic **pot** from Rolling Nature, ₹399
Chenonceaux clear cut-crystal **vase** from Oma Living, ₹54,995; Mito sospeso **pendant light** from Occhio at GM; Adam marble nesting **table** from The Decor Remedy; wooden **chopping board** from woodino.com; Volterra terracotta appetiser **bowl** from Artemest, ₹900; Julius **cushion** from made.com



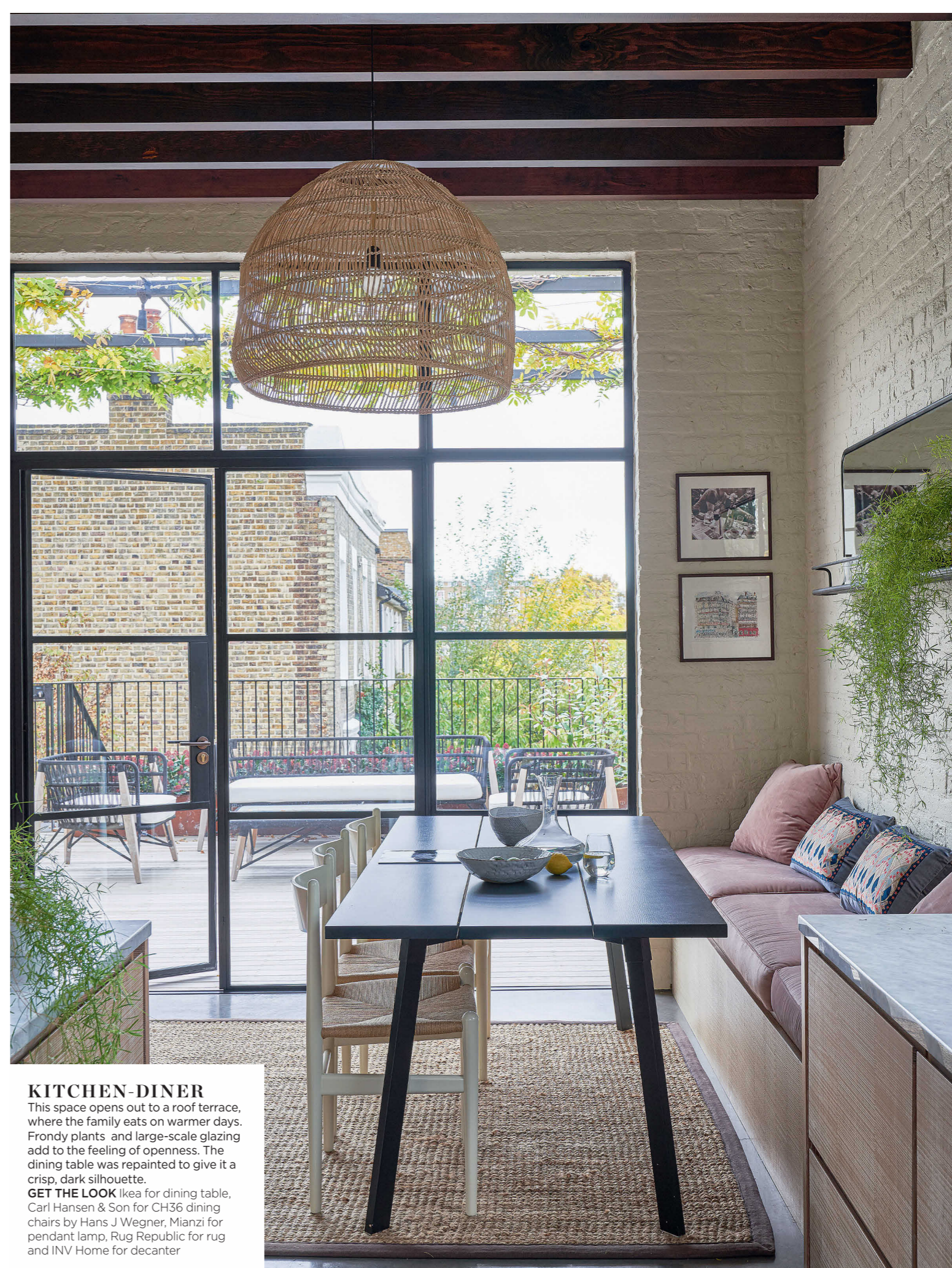
TOP AND ABOVE Wooden flooring from Quick-Step; marble from Classic Marble Company

FOR CONTACTS SEE STOCKISTS

organic reinvention

Raw textures and original features inspired the redesign of Mary and John Mulryan's 'upside-down' family home, which began life as a Victorian pub

WORDS / Jo Leavers * PHOTOGRAPHY / James Merrell * STYLING / Mary Weaver



KITCHEN-DINER

This space opens out to a roof terrace, where the family eats on warmer days. Frondy plants and large-scale glazing add to the feeling of openness. The dining table was repainted to give it a crisp, dark silhouette.

GET THE LOOK Ikea for dining table, Carl Hansen & Son for CH36 dining chairs by Hans J Wegner, Mianzi for pendant lamp, Rug Republic for rug and INV Home for decanter

Palest greens, delicate foliage and natural materials give this home's lofty spaces a serene feel but it wasn't always the case

A doorway with 'Public Bar' etched into its frosted glass is a reminder of the building's previous life. "It closed in the 1970s, but I'd guess it was a proper local boozer with dark corners and a snug," says Mary Mulryan who, with her husband John, created its fresh feel.

The pub had already been converted, but the couple, with the help of Areta Soare from Glen Howells Architects, largely rebuilt the added wing and then reworked the interiors. The result is a calm, contemporary home that connects cleverly to its outside spaces.

Yet celebrating the structure of the building lies at the heart of the redesign. "We wanted to take an authentic approach, with an emphasis on raw materials," says John. So the gritty brickwork has simply been lightened with paint and ceiling beams have been highlighted with dark finishes.


The focus on texture is followed through in Mary's interiors. She opted for a palette of earthy easy greens and greys, woven rattan and well-crafted furniture, from mid-century chairs by Hans J Wegner and Ole Wanscher to modern designs by Pinch. The material for the kitchen and bathroom cabinet fronts is textural, too. "It's a wood veneer with a sawn-edged finish that we gave a diluted white wood wash to bring out the grain," Mary says.

The materials are key to this house's style. In the new-build areas, they include hand-cut bricks, concrete flooring and Carrara marble. In the Victorian part,

reclaimed parquet flooring was chosen for the living room, replacing old boards that couldn't be saved. Original sash windows were refurbished and the frames painted black, their lines echoed in Crittall-style glazing in the adjoining kitchen-diner.

This was an 'upside-down' house when the couple viewed it, with living spaces on the first floor — and they opted to keep it that way. "You get so much more natural light in an upstairs living area," says Mary. What they did add, however, was a roof terrace. "It's like an extension of the kitchen, so the children can play inside and out, and it connects us to the garden," she adds.

To help the unusual layout work, Mary used different materials to 'signpost' the sociable and more private areas of the house. "The bedrooms on the ground floor are carpeted and feature soft hues to define this as our quieter, night-time space," she says. "As visitors enter from the hallway, they are subtly beckoned upstairs to the lighter living spaces, which have wood and concrete underfoot."

Up here, flow-through spaces, natural tones and contemporary art keep things open and easy. Everywhere in this home, materials are seen at their simplest and best — from the pitted surface of Victorian brickwork to the sections of smooth concrete in the dining area. "There's no artifice here. Our home is half old, half new. The two parts relate to each other but in a stripped back, honest way," says John. "Even with two toddlers running around," adds Mary, "that creates an air of calm." 

HOME PROFILE

THE OWNERS

Mary Mulryan, who worked in property development before taking a career break, and her husband John, group MD at a property developer, live here with their children Ruby, three, and Dillon, two.

THE PROPERTY

A converted and extended Victorian pub in south London. The old bar now houses the entrance hall and a guest room; steps lead into the new part, with three more bedrooms (two ensuite), a dressing room and family bathroom. The living areas are upstairs, with a terraced kitchen-diner, a living room and a powder room.



KITCHEN

After a long search, Mary found a wood veneer for the cabinet fronts with an understated horizontal grain pattern that balances texture and simplicity. **GET THE LOOK** Appliances India for crockery, Lacanche for range cooker, Teabox for kettle

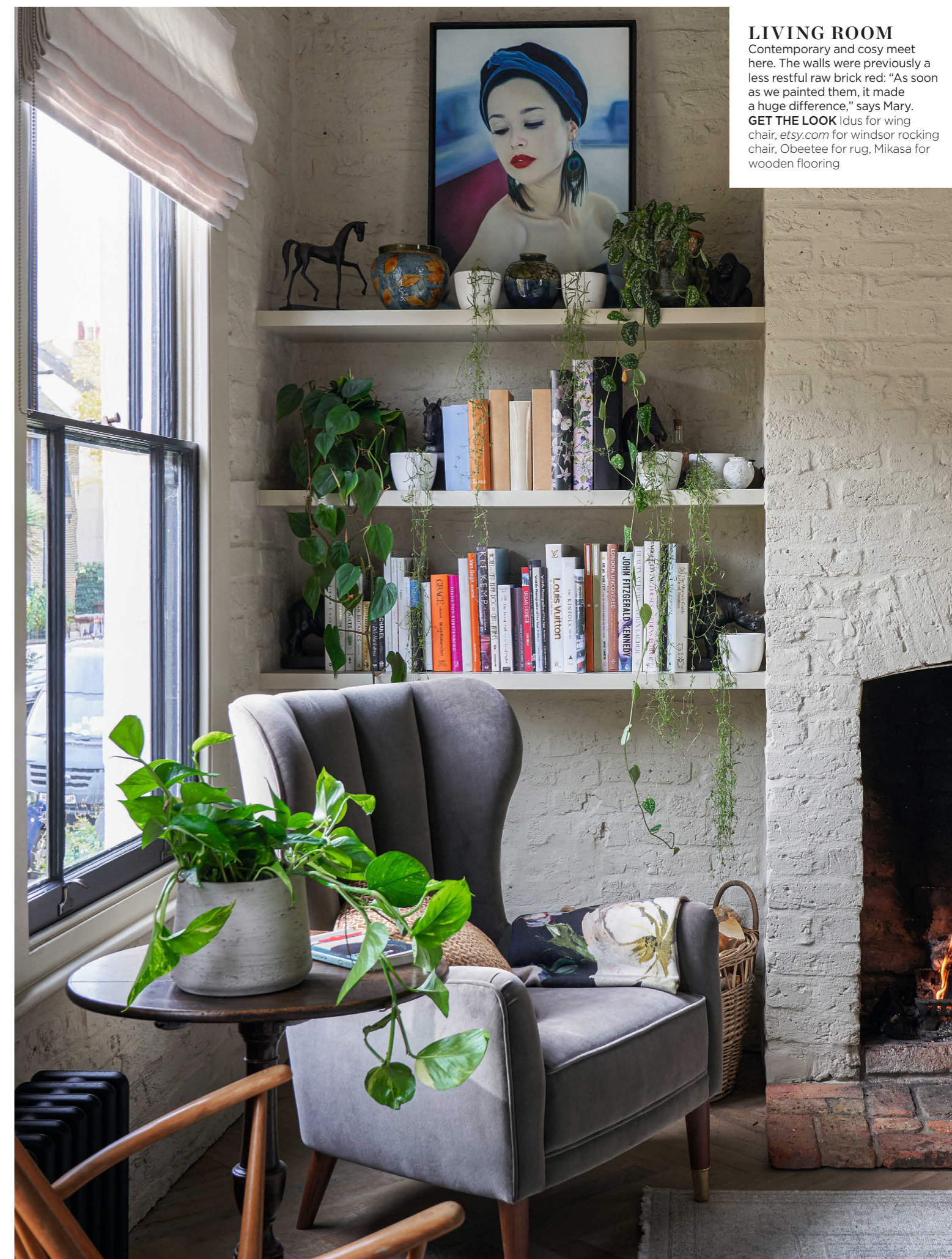


BEDROOM

This bright, inviting room — complete with original frosted glazing — was once the public bar of the pub.
GET THE LOOK Evok for desk, Kapoor Lamps for desk illuminator, The Cottage Emporium for basket, CJ Living for Herman Miller's CrissCross Bubble pendant by George Nelson

LIVING ROOM

The simplicity of the airy, vaulted space is emphasised by window frames outlined in black. A long-line sideboard echoes the beam above, from which foliage is draped, while bold artwork and textured cushions bring depth to the muted backdrop.
GET THE LOOK Knock On Wood for custom-made sideboard and side table, The White Teak Company for face sculpture, Carl Hansen & Son for the OW149 Colonial armchair by Ole Wanscher, Liza Giles and Nicola Hyslop for artworks, Vita Moderna for Flexform sofa, sohohome.com for cushions



LIVING ROOM
 Contemporary and cosy meet here. The walls were previously a less restful raw brick red: "As soon as we painted them, it made a huge difference," says Mary.
GET THE LOOK Idus for wing chair, etsy.com for windsor rocking chair, Obeetee for rug, Mikasa for wooden flooring

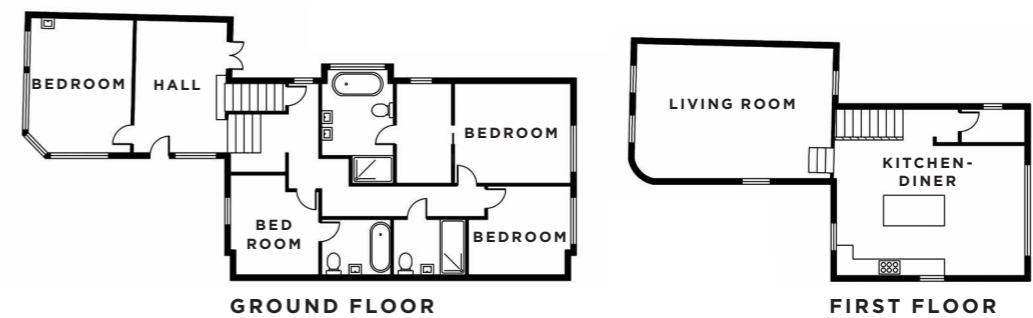
MASTER ENSUITE

The symmetrical arrangement of twin basins on a proportioned vanity unit keeps the peaceful theme of the decor.

GET THE LOOK Küche7 for bespoke vanity, Duravit for basins, C Bhogilal for taps, Vetromoda for mirror



PLANS



MASTER ENSUITE

Delicate foliage complements the natural, pared-back scheme. "These sweetheart vines are my favourite," says Mary. "The colours are amazing and they're like little dangling hearts over the bath."

GET THE LOOK Dulux for the blue grey panelling, Duravit for bathware products

HOME TRUTHS

Foolproof houseplant?

Tradescantia doesn't need much attention, so it's an ideal choice if you tend to forget to water. It grows to a good size, filling an empty corner or shelf.

Favourite weekend away?

Bath or Kildare, Ireland, to see family... but Barcelona and Florence are both great for a romantic escape.

First piece of furniture bought together?

A zinc-topped dining table for a big New Year's Eve party several years ago. It's seen some fun times. If that table could talk...

Best way to unwind?

It often starts with a G&T, then we light a fire. Once the children are in bed, the living room transforms from a play zone into a grown-up space.

To (mis)quote the Wham Rap, John, are you a 'pub man or a club man'?

Pub... of course!

Last item you purchased for your home?

Our rug by Stark Carpet. It was a big investment but we're so pleased with it.



BEDROOM
The relaxed ambience in here, with earthy shades and well-judged pops of colour, makes it hard to believe this was the pub's bar area.
GET THE LOOK curvesandcarvings.com for vintage chest of drawers, sohohome.com for yellow vase, Leah Michelle for art



MASTER BEDROOM
In Mary's hands, neutrals create a soft, cossetting vibe instead of a minimalist one. The room connects to the garden via slim-profile, Crittall-style glazing.
GET THE LOOK Porada for chest of drawers, apartment9 for lamp, Oorjaa for banana fibre pendant light

IDEAS TO STEAL

Lush foliage, soft hues and natural materials give a verdant touch to this home



CLOCKWISE FROM LEFT Victorian cabinet from Beyond Designs; Cambio rug from The Rug Republic; Atomic Tangerine artwork by Aleena Zaidi from Art&Found, ₹2,850; bathtub from Duravit; Lucien sofa from Flexform



HOMES / ETC

organic reinvention

Raw textures and original features inspired the redesign of Mary and John Mulryan's 'upside-down' family home, which began life as a Victorian pub

WORDS / Jo Levens • PHOTOGRAPHY / James Merrill • STYLING / Harry Whelan

KITCHEN-DINER
This space looks on to a roof terrace, which the family enjoy as a morning coffee spot. The dining table was inspired by the original pub's bar area.
GET THE LOOK
Crittall-style glazing from Crittall, Ikea; Lucien sofa from Flexform; Atomic Tangerine artwork by Aleena Zaidi from Art&Found; Cambio rug from The Rug Republic; Ford bathtub from Duravit



TOP AND ABOVE Dusty rose pink fabric from Nirmals; Wooden flooring from Pergo

Adaptive reuse

The transformation of Gary and Keith's home from period property to warehouse-style abode is nothing short of awe-inspiring

PHOTOGRAPHY James Merrell * STYLING Mary Weaver * WORDS Amy Moorea Wong

LIVING AREA

The natural soft pink of the exposed plaster sets the tone in here. "It's such a relaxing, enjoyable space," Gary says.

GET THE LOOK Ansavv Interiors for modular sofa, Moooi for pendant ceiling light, eyesofindia.com for tasselled floor cushion, Inhabit for custom-made sideboard





DINING AREA

"The view from the table is of the staircase running the entirety of the other floors — it has a beautiful sculptural feel to it," explains Gary. **GET THE LOOK** Simply Sofas for table, Idus for velvet dining chairs, Jaipur Rugs for floor covering



LIVING AREA

Tactile finishes of plaster and brick are juxtaposed with soft textiles, luxe details and a rich pop of red. **GET THE LOOK** Ottimo for swivel lounge chair. lightandyou.com for Black floor light, The Rug Republic for floor covering

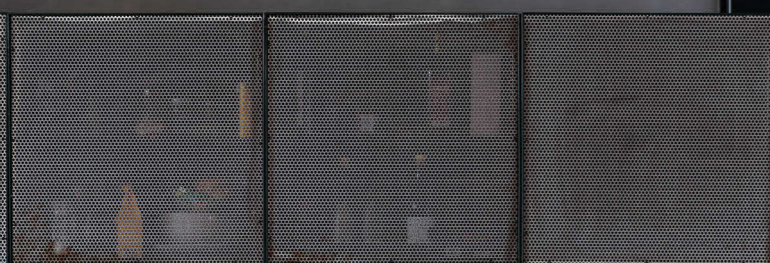
HOME PROFILE

THE OWNERS

Gary Marshall, cofounder of beauty brand Anatomicals, his partner Keith Hirst, director of H|F-K, and rescue dogs Sniff the terrier cross and Labrador Ruby.

THE PROPERTY

A four-storeyed Victorian house, remodelled with a warehouse vibe, in Ramsgate. The ground floor features an open-plan living room, dining area and kitchen. The three levels above accommodate as many bedrooms and a roof terrace.



KITCHEN

"The green-black kitchen allows the other colours to pop out and make a statement," Gary says.

GET THE LOOK Asian Paints bottle green 0205 for units, Bharat Floorings and Tiles for walls and surface

We took away about 350 sqft of floor space, which might seem a bit mad," says Gary Marshall of the dramatic redesign of his now warehouse-style seaside Victorian home. "It's in Ramsgate's conservation area but it isn't listed which was a real stroke of luck it meant that I could be brave with the space." With courage as the catch of the day, Gary emptied the box-like building of many of its walls, replaced the staircase and sacrificed two existing bedrooms for high ceilings and structural surprises. "I wanted to create volume in the house and do something interesting," he explains. "There wasn't anything of architectural or historical merit, so tearing it apart didn't feel too sacrilegious — it was always a quirky building that looks more east London than east coast," smiles Gary, who swapped 30 years in the capital for salty air and expansive beaches two years before the project completed, watching the progress from rentals a few streets away.

There was a story to be found on the walls. Decades worth of time-worn plaster was carefully uncovered, a tactile, chalky finish preserved in jagged-edged blocks atop the exposed original brickwork. "I


wanted it to be rough and I hoped that once I brought in other materials it would feel welcoming," explains Gary. "I had a blip in the middle of winter when there was nothing but bare walls and I thought is this going to be nice to live in? I don't know any more! but it's really harmonious now."

For the furniture, Gary chose nude and rose tones to tie in with the plaster and brickwork, adding flashes of luxe materials and rich colours to combat the house's industrial hardness. "I wanted a contrast but ultimately it was about creating an environment that felt warm and relaxed," Gary explains. "The textiles add to the feeling of comfort — I find it really restful and centring, a real head-clearing space."

What started out as a solo venture somewhat surprisingly became a home for two, with structural engineer Keith working on the project — masterminding the staircase among other areas — before the pair became a couple. Gary and Keith have been in the house only a few months and are yet to host the large gatherings and dinner parties the flowing space would be so suited to. "It's a great layout for conversation, you

can have pockets of people in different areas and still communicate easily," says Gary. "It'll be a very good party house."

This is a home designed to ebb and flow with the tides, with the multitude of metalwork, from the exposed copper piping to the fretwork covering the staircase and kitchen cabinets, liable to take on a patina as it ages. "I find the idea of embracing the passing of time quite charming, and I think it suits the nature of the building with the other historic marks and indentations it carries," Gary says.

Perhaps the most unexpected space in the house is the light well, which runs the height of the building's four storeys. "It creates a different type of light and opens the whole house up," explains Gary. "It's very dramatic and exciting — if you look down from upstairs, it makes your heart race." The 'void', as Gary and Keith call it, is ruled over by a troop of whimsical Seletti monkey lamps, each framed by a window leading off the bedrooms, and adding a playful twist to the house. "The wall needed something, and I just thought, let's have some monkeys, it seemed like a natural place for them to hang," smiles Gary. "They're an extra bit of fun." 



LIGHT WELL

The structure runs to the top of the house, with playful monkey lights.

GET THE LOOK INV Home for monkey lamps by Seletti



BEDROOM

This space doubles as an office. "It's a very restful place to sit and work" says Gary. "I find it one of the most calming rooms in the house."

GET THE LOOK Meztl Design for clothes rail, The White Teak Co for wall light, AKFD for side table, Emery Studio for decanter, Shades Of India for pillow covers



HOME TRUTHS

What's cooking?
Keith's the chef of the house — he's a big fan of Nigel Slater.

Favourite thing about winter?
Sweaters.

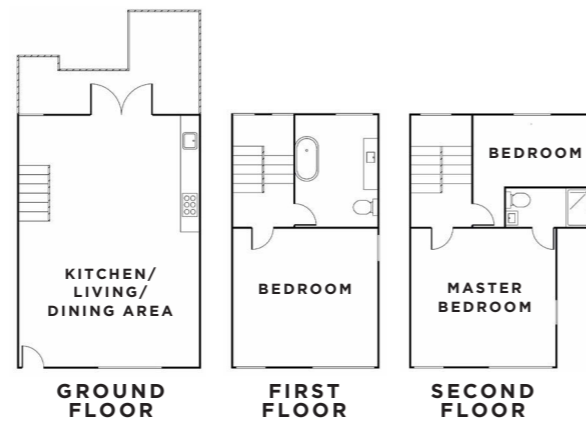
If you could have any superpower, what would it be?
Invisibility — I'd get up to all sorts.

What does the house smell like?
Czech & Speake No. 88 fragrance.

Dinner party menu?
Champagne and fresh local seafood.

What's on repeat at the weekend?
Usually Kylie Minogue's album Disco.

the blueprint



MASTER BEDROOM

Gary had some of the furniture sprayed black to match the beams.
GET THE LOOK Viya Home for brass bedside table, Danube Home for chest of drawers, artsy.net for art prints, Pergo for wooden flooring



BATHROOM

Textured Venetian plastering gives the space movement and nods to the home's coastal locale.
GET THE LOOK Valueline for basin and bath, Gulmohar Lane for hemp rug, Pure Home & Living for soap dispenser bottles

IDEAS TO STEAL

The interesting interplay of metal and bricks add Victorian touch to this home

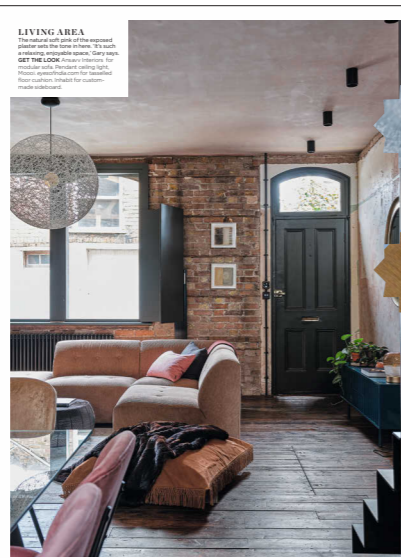


CLOCKWISE FROM LEFT Crystal table from Kartell; Melt table lamp from Tom Dixon; Water bottle from crockeri.in; Mirror from Sage living; Adelaide living chair from Boconcept; Floor cushion from Ikea; Forneveth kitchen faucet from Amazon.in

industrial luxe

The transformation of Gary and Keith's home from period property to warehouse-style abode is amazing

PHOTOGRAPHY James Merrill • STYLING Harry Wilson • WORDS Amy Phoenix Wong



LIVING AREA
The natural light of the exposed brickwork is the star of the show. To add ambient, unobtrusive space, Gary says...
GET THE LOOK - Venetian plaster from Pratta India; Oak flooring from Mikasa

TOP AND ABOVE Venetian plaster from Pratta India; Oak flooring from Mikasa

DESIGN

INSPIRATION / PEOPLE / PLANNING / SHOPPING



100
DESIGN NEWS
Bathroom fittings, wall finishes, kitchen sets, espresso and cocktail makers, and lots more...

102
DESIGN DOSSIER
This Dehradun property designed by Rano Singh of The Muse is the perfect home in the hills.

DESIGN NEWS

Discover the latest in the market for your big-ticket buys and more...



ALABASTER WHITE

Grohe Ceramics latest designs in bathroom fittings come in three collections, Essence, Eurocube and Bau. While Essence primarily offers a range of washbasins, toilets, and stand-alone bathtubs, Eurocube is influenced by the crisp angles of a cube and Bau is stimulated by softer and rounded edges. grohe.ca

CHAMBER OF BLUE

A-Class Marbles introduces a series of surfaces made using Italian porcelain stoneware and ceramics. This durable and diverse collection is special for its impeccable Italian craftsmanship. aclassmarble.co.in



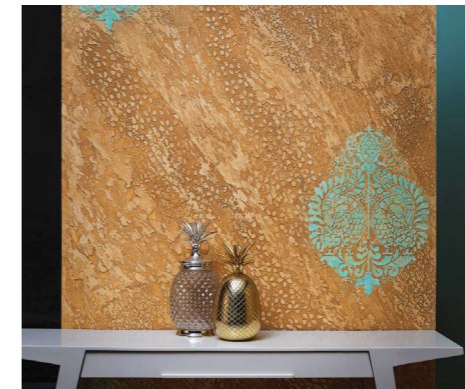
SINUOUS SHAPES

The soft, curvy edges of Hindware's newest basins are matte finished white or black. Its structure makes it easy to maintain and also prevents water splashes. hindwarehomes.com



EMBRACING ZEN

What's not to love about this range of latest wall finishes from Asian Paints Royale, which bring home natural textures of stone, clay, concrete and rusted metal? asianpaints.com



SHAPING SPACES

The Vive faucet by Kohler features a fluid shape inspired by the movements of a ballerina. The intuitive design is presented in rose gold and polished chrome. kohler.co.in



Bringing Nature In

Equipped with a UV-resistant formula are Window Magic's newest collection of aluminium windows. These are durable for extreme climatic conditions and available in varied finishes and shades. windowmagicindia.com



LOFTY INTERIORS

We love these industrial-inspired cooking spaces by Aster Cucine, which combine the old with the new. Available at Ottimo. ottimo.in

TIPSY WEEKENDS WITH

Barsys' advanced coasters that are revolutionising the way you'll make cocktails. All you have to do is select the cocktail you'd like, place a glass on the coaster and follow the instructions on Barsys's app. The device changes its colour, indicating when your drink is ready! barsys.io



SOMETHING'S BREWING

Kaapi Solution's Gaggia Classic range of semi-automatic espresso machines comes with a steam wand that enables a velvet-like milk texture, improved pump mounts for quieter brewing, 58mm portafilter and pre-ground coffee pods. kaapisolutions.com



Classical tunes

This home in the hills by Rano Singh is decked in natural and nature-inspired furnishings, most of which are customised by her venture The Muse

Words/ Swati Singh Photography / Deepak Agarwal

Family room

Light streams in through Aerolux Blinds and illuminates the muted interiors that pop owing to the vibrant armchair upholstered using fabric from The Pure Concept. Accessories include mirror and rug from The Muse as well as candle holder and potted plants from OMA Living.

Seating area

Armchairs covered in floral motifs and the green shade on the lamp bring the outdoors in.

PENTHOUSE, DEHRADUN



The property is surrounded by natural greenery and punctuated by the shifting patterns of light and shade that are particularly characteristic of the hills



Over the four decades that Delhi-based interior designer Rano Singh has been in the industry, she has gained renown for her design raison d'être that's classic, timeless and evergreen.

This is especially evident in this charming getaway, which is located in a leafy suburb of Dehradun. Under her venture The Muse, Rano has provided interior and furniture solutions for this project such that it complements the natural beauty of the outdoors.

Lush with natural greenery and punctuated by the shifting patterns of light and shade that are particularly characteristic of the hills, Rano has focused on lighter colours given that "the dark and light greens seen outside form a constant backdrop".

The colour palette is largely muted, owing to the use of off-whites, beiges and browns, but Rano has punctuated these with pops of colour in the form of fabric and accessories. Polished wood and glossy marble surfaces offset the softer aspects of the decor.

A key challenge for the creative was effectively juxtaposing artificial lighting with the ample natural light that filters through the house around the clock. She's achieved this by combining both niche as well as functional lights in each space, depending on their respective functions.

The overall decor and demarcation is crafted as a family getaway, true to the brief she was given. "I created plenty of nooks and niches as well as multiple seating arrangements within rooms, so that there's plenty of options for the family's use as well as for when they host larger get-togethers," Rano concludes.



Main bedroom
This semi-formal seating arrangement is resplendent in olive hues and floral patterns. All soft furnishings are from Cottons and Satins, while the wall-mounted artwork is by A Ramachandran from Studio Art.



Study desk
The use of bright blue upholstery offsets the monochromatic space that's done up using flooring from FCML, soft furnishings from The Pure Concept, rug from The Muse and accessories from OMA Living.



Powder room
"We've complemented the marble used in all the bathrooms with the help of a special wood flooring from FCML," says Rano. This one uses Aerolux Blinds and bathware from Krone.



Guest room
Complementing shades of beige, taupe and white make up this bedroom that's set on flooring from FCML.

summer flavours, winter ways

BILL GRANGER'S SUNSHINE-ON-A-PLATE RECIPES ARE GUARANTEED TO WARM YOU FROM WITHIN



YELLOW SPLIT PEA AND TURMERIC DAL

serves 4-6

- 1 onion, roughly chopped
- 8 cm piece fresh ginger, peeled and roughly chopped
- 3 garlic cloves, roughly chopped
- 5 cm piece fresh turmeric
- 4 tbsp light-flavoured oil
- 3 tsp fenugreek seeds
- 3 tsp yellow mustard seeds
- 3 tsp ground coriander
- 3 tsp ground cumin
- 1½ tsp chilli powder
- 250 gm yellow split peas
- 600ml coconut milk
- 6 makrut lime leaves

TO SERVE

- Fruity chutney
- 1 large handful mint, chopped
- 1 large handful coriander, chopped
- 1 green chilli, sliced
- Coconut yoghurt
- Pickles, optional

1 Put the onion, ginger, garlic and turmeric into a food processor and mix to create a rough paste. Heat the oil in a large heavy-based pan over medium heat. When the oil is hot, add the paste, fenugreek seeds and mustard seeds. Cook for five minutes, stirring frequently, until the paste is fragrant. Add the ground coriander, ground cumin and chilli powder and cook for another minute.

2 Pour the split peas and coconut milk into the pan along with 500ml cold water. Add the makrut lime leaves. Bring to the boil, simmer strongly for 10 minutes, stirring frequently, then reduce the heat and simmer gently for 45 minutes, stirring to prevent sticking. If it looks dry, add more water.

3 Serve the dal with a rich, fruity chutney along with the mint, coriander, chilli, a dollop of coconut yoghurt and, if you like, some pickles.

PHOTOGRAPHS MIKKEL VANG.



BRAISED TOFU AND MUSHROOMS WITH BLACK BEANS AND CHILLI TOMATO SAUCE

serves 4

FOR THE SZECHUAN SALT

- 1 tsp fennel seeds
- 1 tsp Szechuan peppercorns
- 1 tsp sea salt

FOR THE CHILLI TOMATO SAUCE

- 2 tbsp light-flavoured oil
- 50 gm fresh ginger, peeled and finely chopped
- 50 gm finely chopped garlic
- 700 gm cherry tomatoes, halved
- 100 gm chilli bean paste
- 100 gm fermented Korean bean paste (doenjang)

- 2 tbsp light-flavoured oil
- 250 gm chopped mixed mushrooms
- 400 gm firm tofu, cut into 2cm dice
- 100 gm edamame beans
- 60 gm soaked fermented black beans
- 1 small bunch coriander, chopped
- 1 spring onion, finely chopped
- 1 tbsp crispy shallots
- Steamed rice, to serve

1 To make the Szechuan salt, toast the fennel seeds and peppercorns in a dry pan for five minutes over low heat. Put in a spice grinder with the salt and grind to a powder.

2 To make the chilli tomato sauce, heat the oil in a pan and add the ginger. Cook until slightly coloured, then add the garlic. Add the tomatoes, let them blister and release their juice, then add bean pastes. Stir in 100 ml hot water, a little at a time. Simmer for five-eight minutes.

3 Meanwhile, heat the oil in a pan and add the mushrooms and tofu. Cook until the tofu is just crisp, then add the edamame and black beans and heat through gently. Add to the chilli tomato sauce and stir through.

4 Spoon into bowls and garnish with coriander, spring onion, shallots and Szechuan salt. Serve with steamed rice.

COCONUT FISH CURRY

serves 4

- 1 tbsp chilli flakes
- 1 tbsp Korean chilli flakes
- 2 red chillies
- 3 garlic cloves
- 2 French shallots, peeled
- 70 gm fresh ginger, peeled and roughly chopped
- 2 lemongrass stalks, white part only, bruised and roughly chopped
- 1 tbsp curry powder
- 1 tbsp ground cumin
- 1 tbsp ground coriander
- 1 heaped tsp shrimp paste
- Light-flavoured oil
- 60 gm palm sugar, crumbled or grated
- 3 tbsp tamarind purée
- 400 ml coconut milk
- 10 makrut lime leaves
- 1 kg barramundi fillet, cut into bite-sized pieces
- TO SERVE**
- 1 cucumber, sliced into thin ribbons
- 50 gm fresh ginger, peeled and finely chopped
- 1 small handful holy basil
- 1 small handful coriander
- 1 bunch gai lan (Chinese broccoli), stalks removed, blanched
- 1 tbsp sambal ranggup ikan bilis
- 1 lemon, cut into wedges
- Steamed brown rice

1 To make the curry, blend the aromatics, spices and shrimp paste with a little oil to make a curry paste. Heat a little more oil in a heavy-based pan and cook the paste over low heat for six-eight minutes until it deepens in colour. Add the palm sugar and cook until dissolved. Add the tamarind and cook for three-five minutes.

2 Add the coconut milk and 600 ml water with the lime leaves and simmer for 20-30 minutes until the sauce has further deepened in flavour and colour.

3 Add the fish to the sauce and heat through for five-six minutes until the fish is cooked. To serve, toss together the cucumber, ginger, basil and coriander to make a salad. Arrange the gai lan in four bowls, add the curry, and garnish with the cucumber salad. Serve with ikan bilis, lemon wedges and brown rice.



CHICKPEA, KALE AND PANEER CURRY

serves 4

- 2 tbsp light-flavoured oil
- 200 gm paneer cheese, cut into cubes
- 1 onion, chopped
- 3 garlic cloves, crushed
- 3 cm piece fresh ginger, peeled and grated
- 1 tsp hot curry powder
- 1 tsp ground cumin
- 1 tsp ground turmeric
- ½ tsp dried chilli flakes
- 2 x 400 gm tins chickpeas, rinsed
- 300 gm curly kale, stalks removed, roughly shredded
- 400 ml vegetable stock
- Juice of ½ lemon, plus extra wedges to serve
- Steamed white rice, to serve

1 Heat a drizzle of the oil in a large non-stick frying pan over medium heat. Fry the paneer until warmed through and browned on all sides, then remove from the pan and set aside.

2 Add the remaining oil to the pan and fry the onion for five minutes, or until soft. Add the garlic, ginger and spices and fry for two minutes, or until fragrant.

3 Add the chickpeas, kale and stock to the pan, stir to coat in the spices and then bubble until the kale is tender and the stock has been absorbed.

4 Add the lemon juice, fold in the paneer, and serve with hot, steaming white rice and lemon wedges.



Australian Food
by Bill Granger
(₹2,248,
amazon.in)

Stockists

Find what you're looking for at these stores across the country.

AKFD

akfdstudio.com

Abstrac Home

Maple Trade Centre,
Near Surdhara Circle
Thaltej-380054
Ahmedabad
Tel: 9920758982

Address Home

addresshome.com

Alessi

alessi.com

Alsorg

alsorg.com

apartment9

apartment9.in

Art&Found

artandfound.co

Artemest

artemest.com

Artemis Cast Stone

artemiscaststone.com

Asian Paints

asianpaints.com

B&B Italia

beitalia.com

Baxter

baxter.com

Berger Paints

bergerpaints.com

Beyond Designs

beyonddesigns.in

Bharat Flooring

bharatfloorings.com

Boconcept

boconcept.com

C Bhogilal

cbhogilal.com

Calligaris

calligaris.com

Christian Louboutin

us.christianlouboutin.com

CJ Living

cjliving.in

Classic Marble Company

classicmarble.com

Dash Square

dashsquare.com

Danube Home

danubehome.in

Differeniture

diffeniture.com

Dulux

dulux.in

Duravit

duravit.in

Emery Studio

Shakuntala Farm
Ghittorni
New Delhi
Tel: 9810081810

Evok

evok.in

Fabindia

fabindia.com

Flexform

flexform.in

Flos

flos.com

Furniture Library

furniturelibrary.in

Gulmohar Lane

gulmoharlane.com

House of Rugs

houseofrugs.in

Idus

idus.in

Ikea

ikea.com

Jaipur Rugs

jaipurrugs.com

Kartell

kartell.com

Meztli

meztli.it

Mooodi

mooodi.com

MTM Solutions

mtmsolution.com

Nestasia

nestasia.in

Nirmals

nirmals.com

Obeetee

obeetee.com

Occhio

5A-J,Shree Laxmi Ind.
Estate, Andheri West
Mumbai
Tel:22-26340011

Ochre at Home

ochreathome.com

Oma living

omaliving.com

Oorjaa

oorjaa.in

Orange Tree

orangetree.in

Pergo

pergo.co.in

Pratta India

prattaindia.com

Proform Interiors

Ground Floor, JMD
Regent Plaza
Mehrauli-Gurgaon Rd
near Guru Dronacharya
Metro Station
Gurugram
Tel: 0124 466 0600

Pure Home & Living

purehomeandliving.com

Quick-Step

quick-step.in

Riva1920

riva1920.it

RK Marbles

rkmartle.com

Rolling Nature

rollingnature.com

RR Decor

rrdecor.com

Seetu Kohli Home

seetukohlihome.com

Shalimar Paints

shalimarpaints.com

Shades of India

shadesofindia.com

Sieger

sieger-germany.com

Sources Unlimited

sourcesunlimited.co.in



Spin
madewithspin.com

Studio Covers
studiocovers.co

Swarovski
swarovski.com

Sweetpea & Willow
sweetpeaandwillow.com

The Crio
thecrio.com

The Decor Remedy
thedecorremedy.com

The Rug Republic
therugrepublic.in

The White Teak Company
whiteteak.com

Tom Dixon
tomdixon.net

Valueline
valueline.com

Vetromoda
vetromoda.com

VFM Design
vfmdesign.in

Vitra
vitra.com

Viya Home
viyahome.com

Walter Knoll
walterknoll.de

Westelm
westelm.in

The products featured editorially are available in the above stores. Prices and availability were checked at the time of going to press. Some shops carry select items only. We cannot guarantee that the prices and availability of listed products. Some of the international products have the listed prices converted to rupees at the rate as on the day of work.

At Home With

VINCENT ROY

A peek into the life and learnings of the Puducherry-based French furniture designer



MY JOURNEY

I AM ESSENTIALLY A CABINET MAKER, an ebenist as we say in French. I embarked on this journey when I was 16, since a craftsman's qualification comes only through experience. My first memory takes me back to the time I was an apprentice in Paris, restoring antique furniture in a small workshop belonging to a cabinet maker. I couldn't believe the legacy of these pieces — some of them were over 500 years old and appeared worn out. But when we restored them, they'd get a second lease of life, granting them another 200 years. I still clearly remember the smell of the fish glue we used and how my arms ached from the effort of polishing the furniture. It was always worth the effort. The details of the joinery and crafting techniques continues to help me even now, when it comes to making decisions in the structure of my designs. I eventually moved to India at the age of 20 years. Here, I met Puducherry-based French carpenter Patrick Lafourcade, and began my apprenticeship with him. It's how I got interested in designing and creating chairs, which I still do as part of my venture WoodnDesign.

DESIGN PROCESS

FOR EACH PIECE OF FURNITURE, I begin by drawing three profiles or perspectives and print them out on A1 size paper. I ensure that the joinery is also drawn, so that we can start crafting the template much like a tailor does with a pattern. Next, we prepare the cut-wood sections and initiate the joinery process. All the pieces are then assembled, shaped, sanded and polished. While this is a typical process followed for new pieces, I also get inspiration from iconic Scandinavian designers from the 1950s like Hans J Wegner and Kofod-Larsen as well as French ones like Perriand, Royere and Prouvé. I like classic style of furniture but with a modern twist. I also follow French, British and Indian decor magazines to keep up with the big picture, trends and evolving tastes.



TOP TO BOTTOM Arctic bed, Vincent Roy in his atelier, The foldable Dolphin lounge chair



TOP AND ABOVE Customised dining ensemble for Ali Baldiwala's Mumbai project, Renuga coffee table

CHALLENGES

AFTER EXPERIENCING A SIGNIFICANT LEARNING CURVE, I naturally wanted to set up a workshop where I could create my own designs. What I didn't know or realise at that time was the amount of work that goes into having your own workshop. It's not just about becoming a designer or craftsman but one also has to become a businessman.... Something I am still learning. As people, we always want to be independent and be able to make our own choices. However, we tend to dismiss how difficult and lonely an entrepreneur's life is. There are so many challenges that I don't know where to start. It takes a tremendous amount of planning and coordination to send a perfect piece out, which can sometimes be daunting. The planning schedule for each craftsman's workload and each client's delivery expectation has to be in sync. It's also important to create a good atmosphere in the workshop and to make sure everyone is feeling good and also progressing.

ON MY TO-DO LIST

WHILE I CAN WORK FROM ANY PART OF THE world, what I like about Puducherry is the local talent as well as the lifestyle the city offers. I am in the process of setting up a new and bigger workshop! This is not to expand the scale of production but to create a much more comfortable, spacious and ergonomic workplace. Meanwhile, we've added 20 new designs in our 2021 repertoire and are also working on 12 new designs which will be updated in our catalogue for next year.



WEBSITE
woodndesign.in

WORDS VARUNI MOHAN / PHOTOS TALIB CHITALWALA (DINING ENSEMBLE)